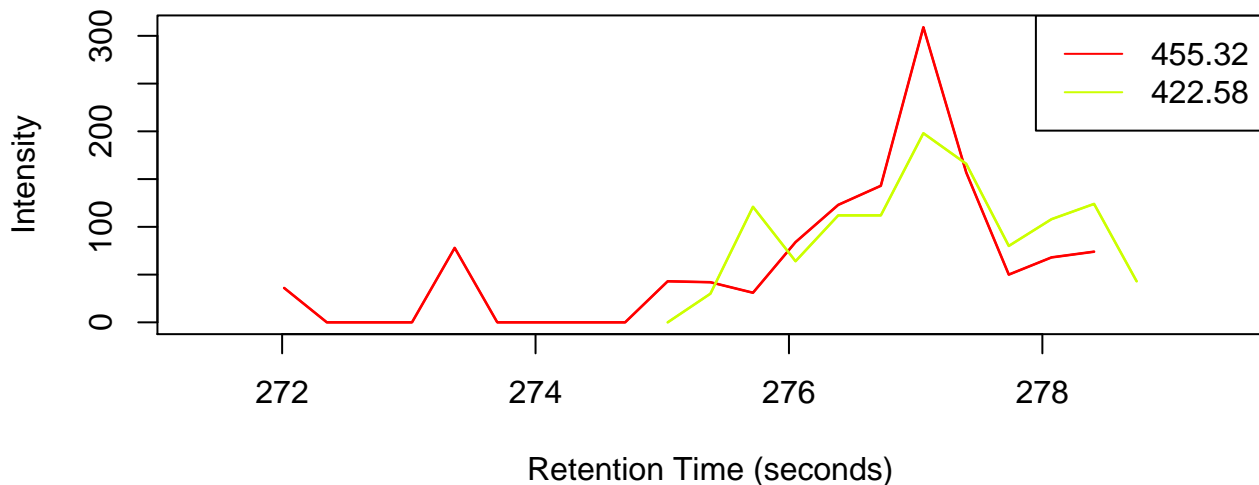


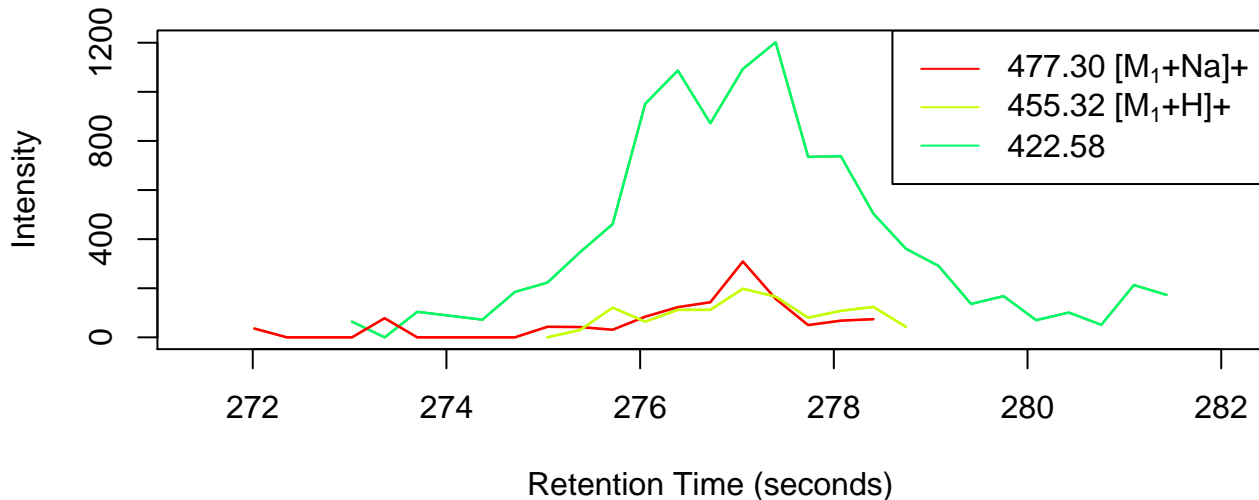
Extracted Ion Chromatograms for Pseudospectrum 8

Time: From 273.529 to 278.576 , mean 277.061



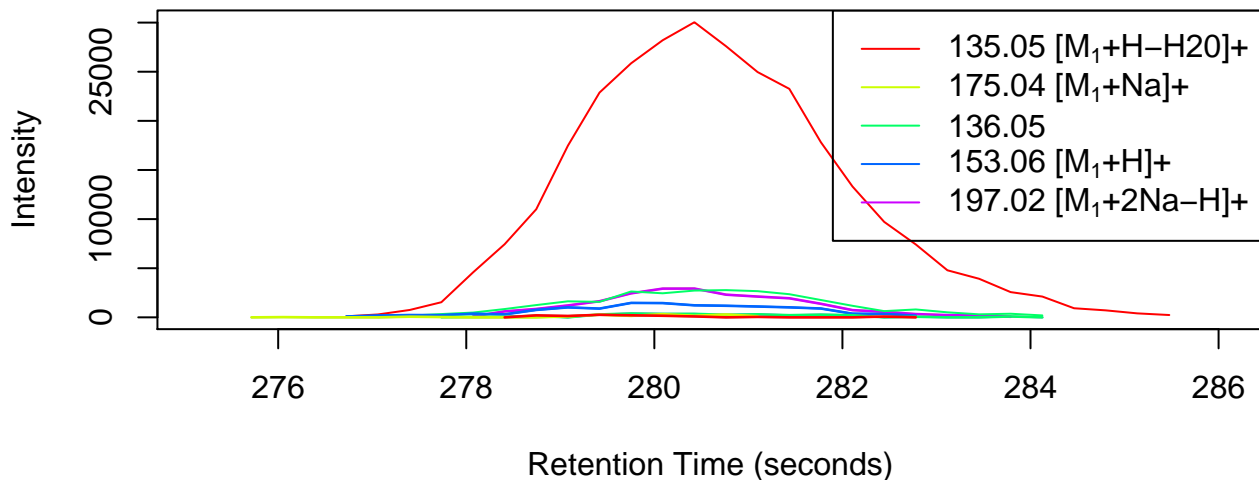
Extracted Ion Chromatograms for Pseudospectrum 8

Time: From 273.361 to 279.529 , mean 277.061



Extracted Ion Chromatograms for Pseudospectrum 2

Time: From 277.206 to 283.454 , mean 280.426



Pseudospectrum 2 280.43 s , Sample: 1

