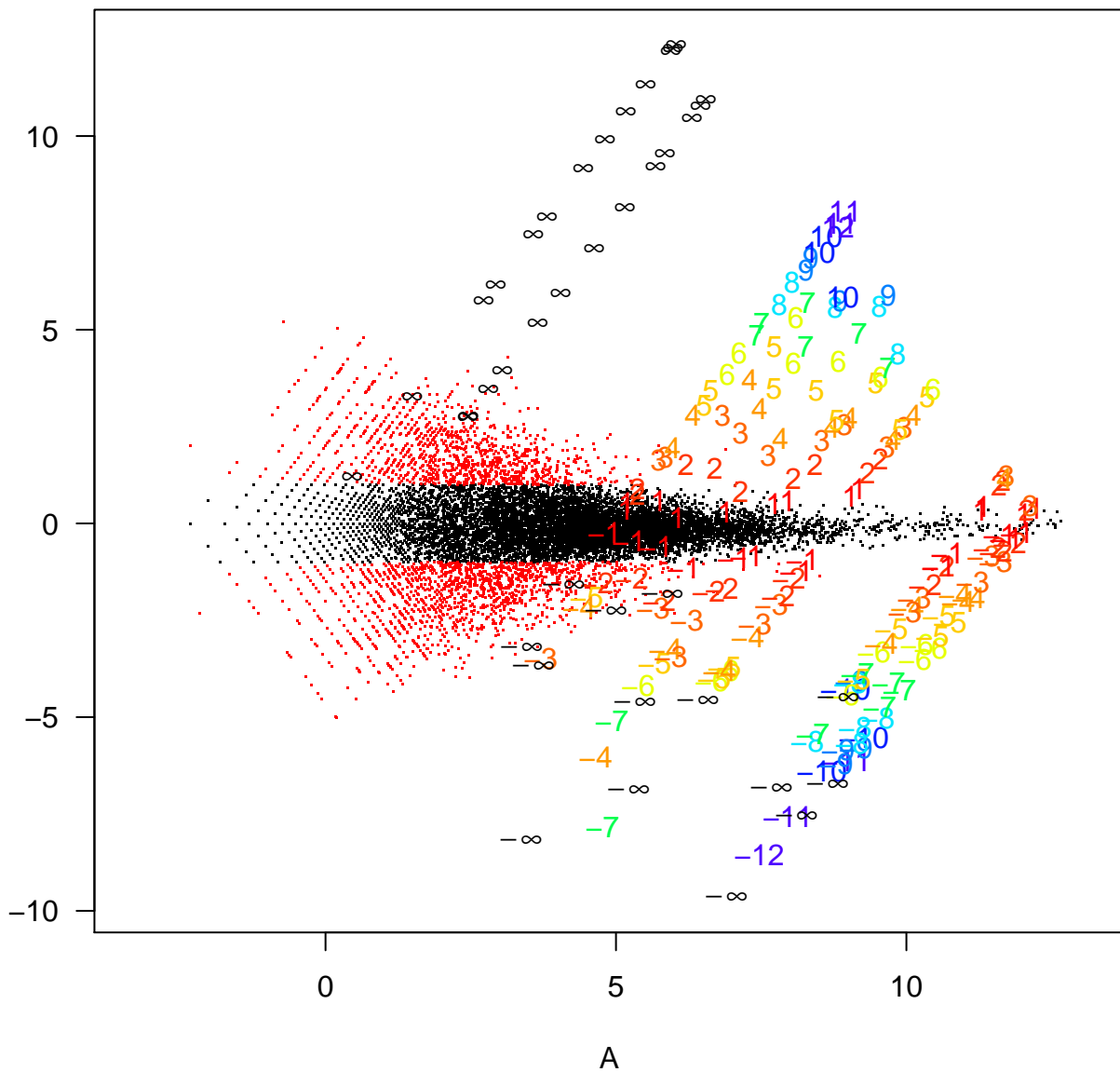
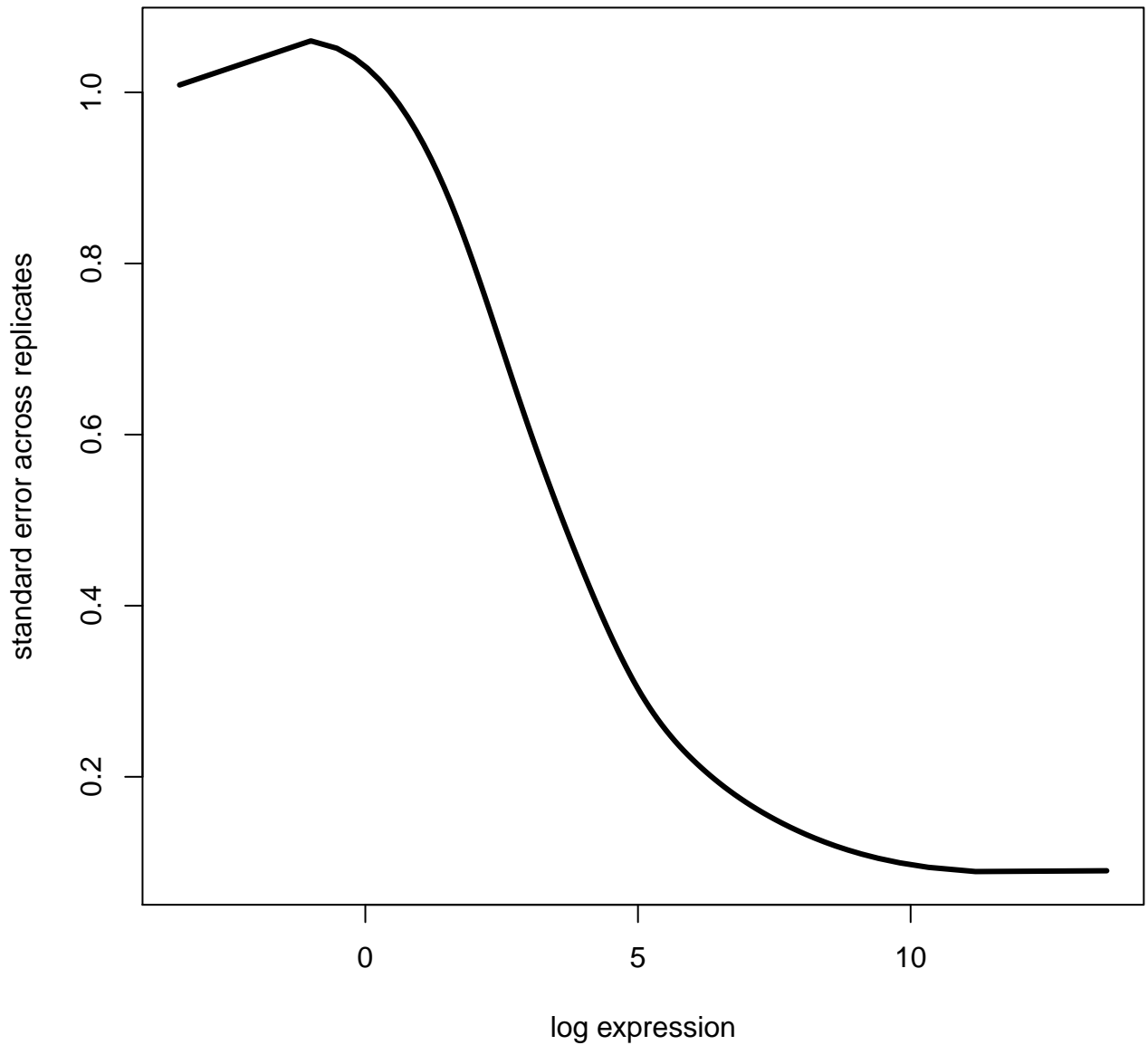


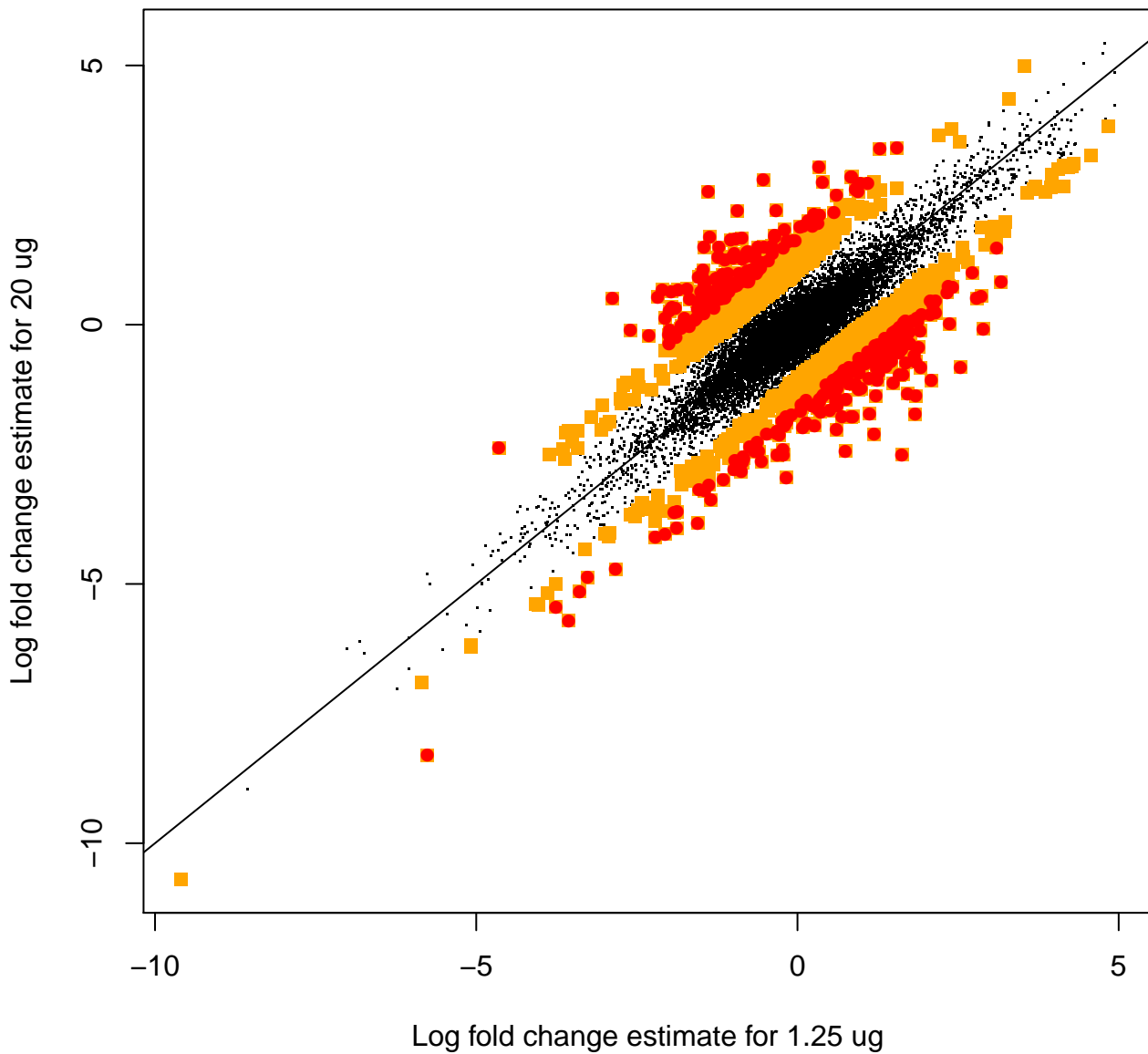
Figure 1



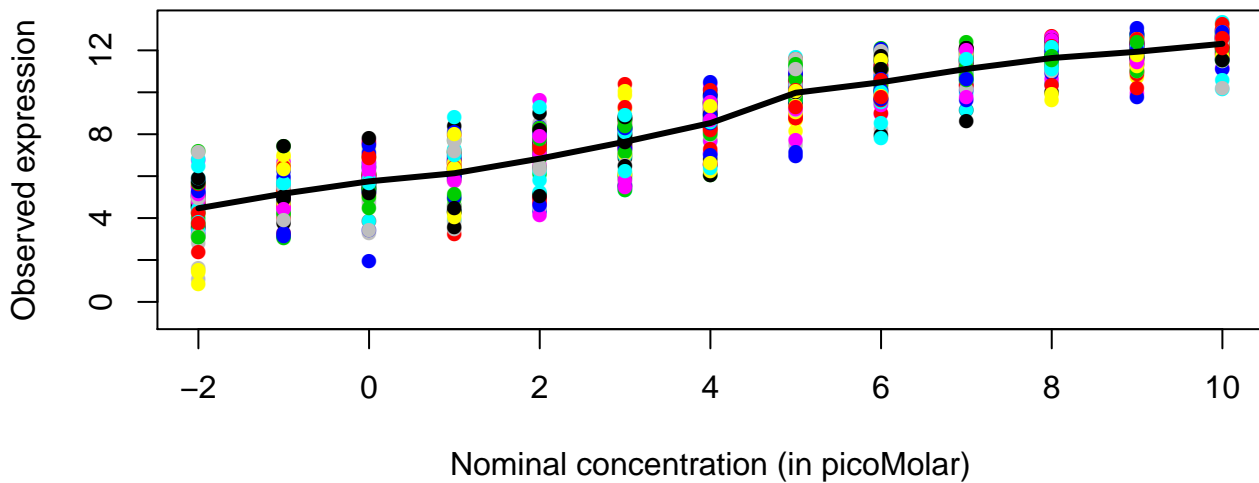
**Figure 2**



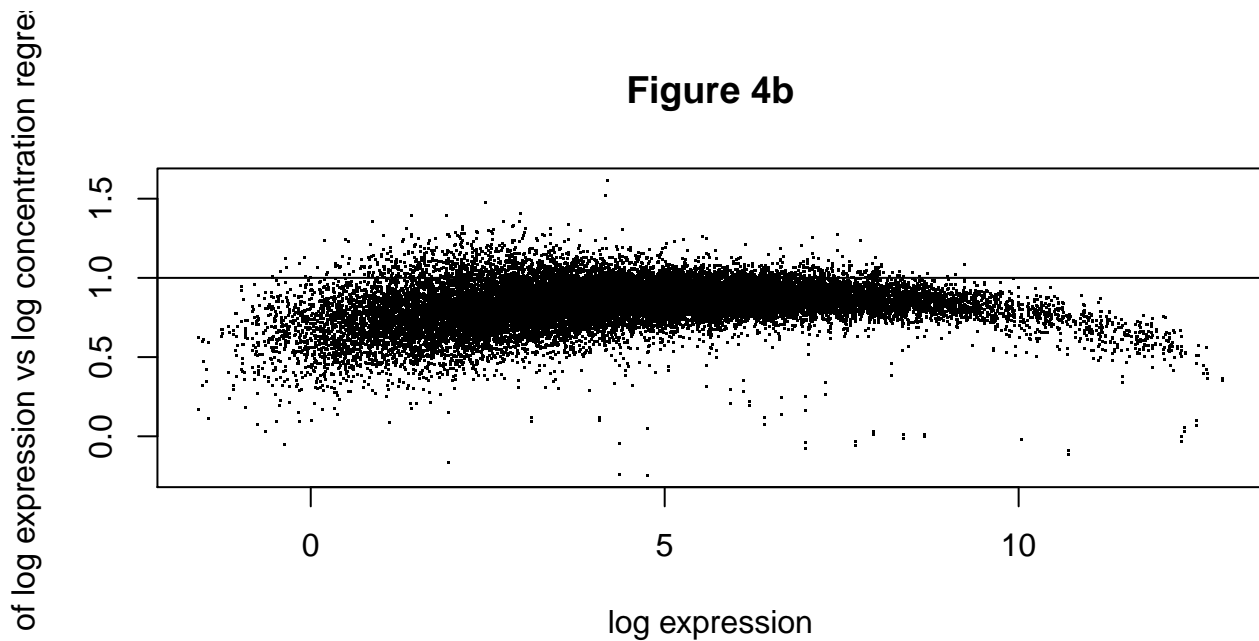
**Figure 3**



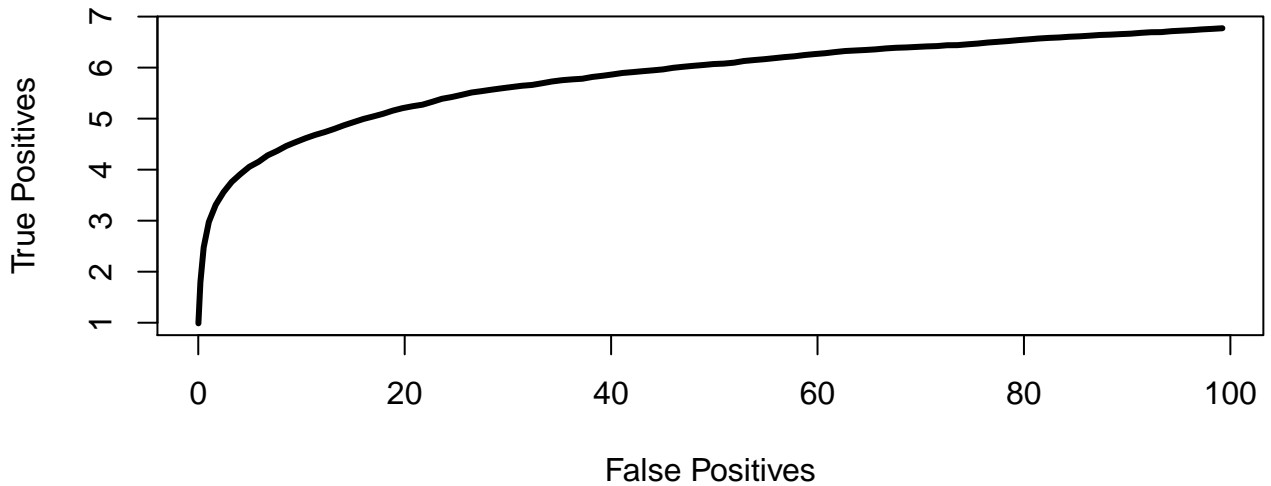
**Figure 4a**



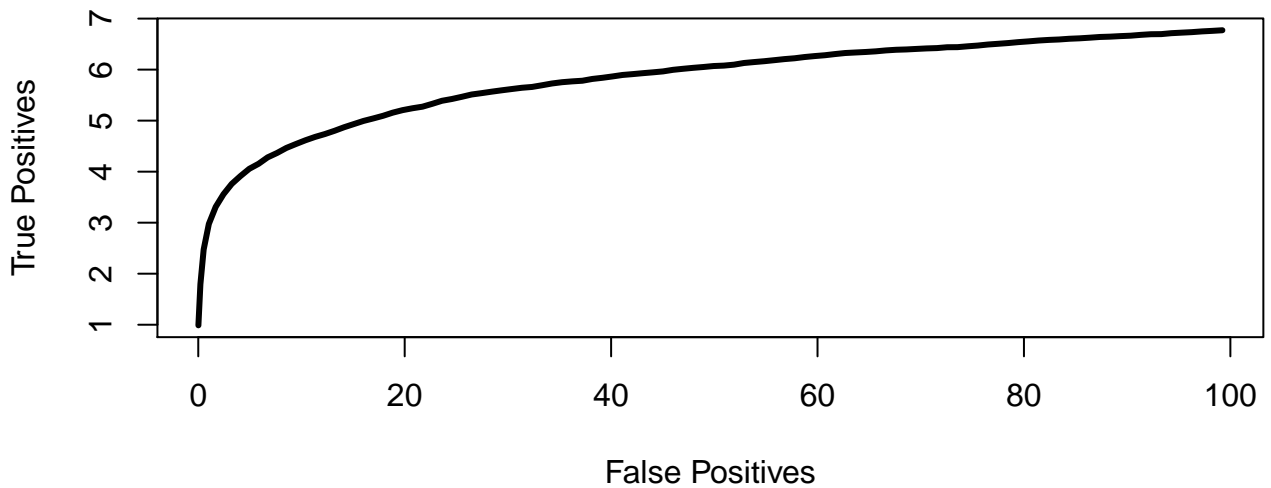
**Figure 4b**



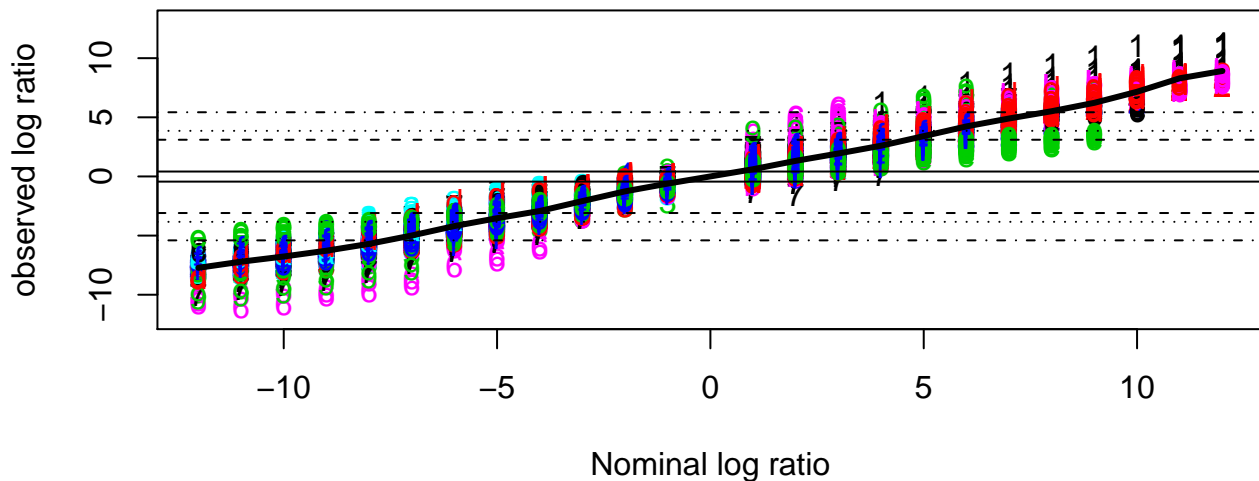
**Figure 5a**



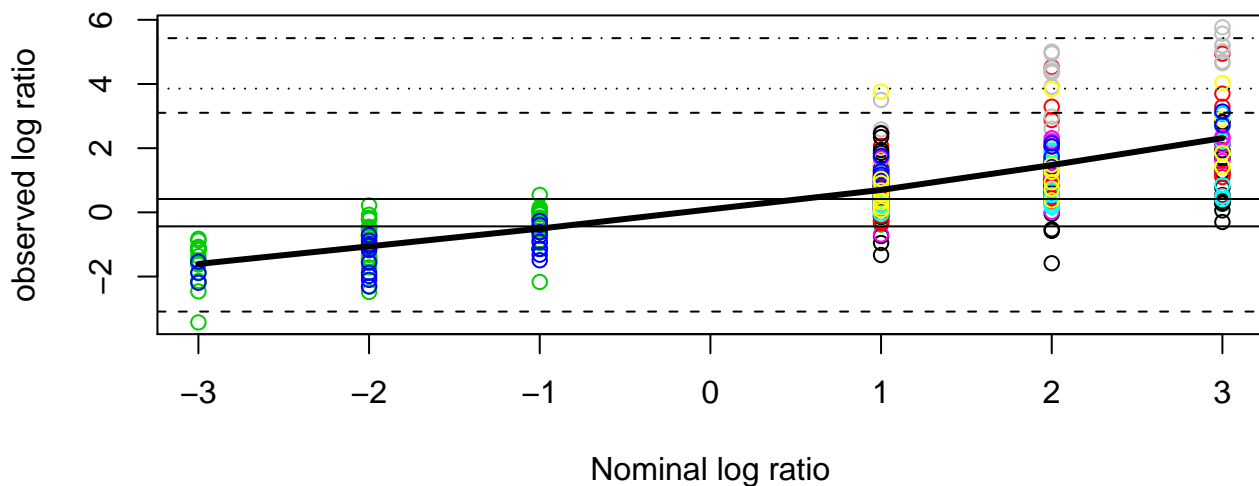
**Figure 5b**



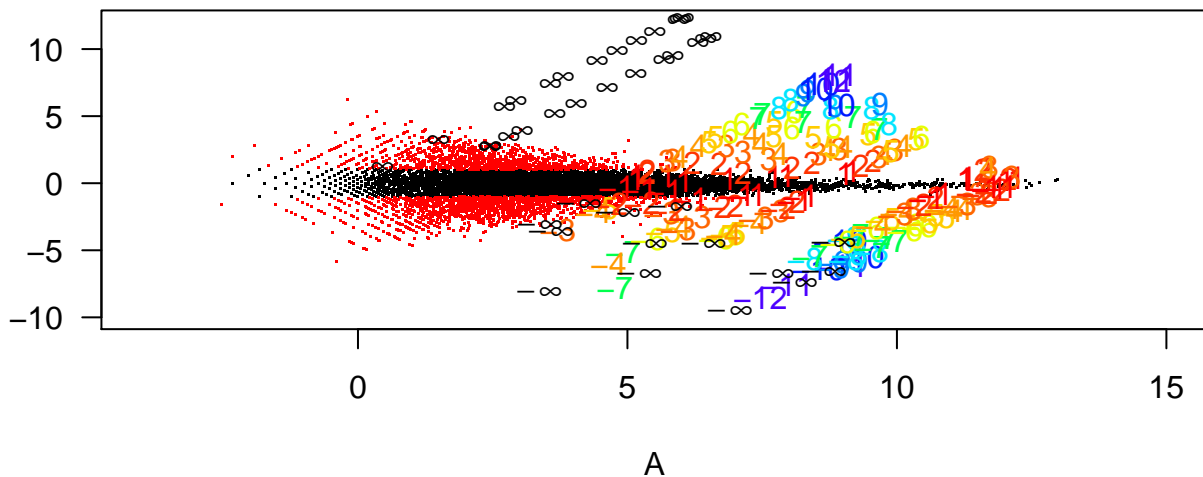
**Figure 6a**



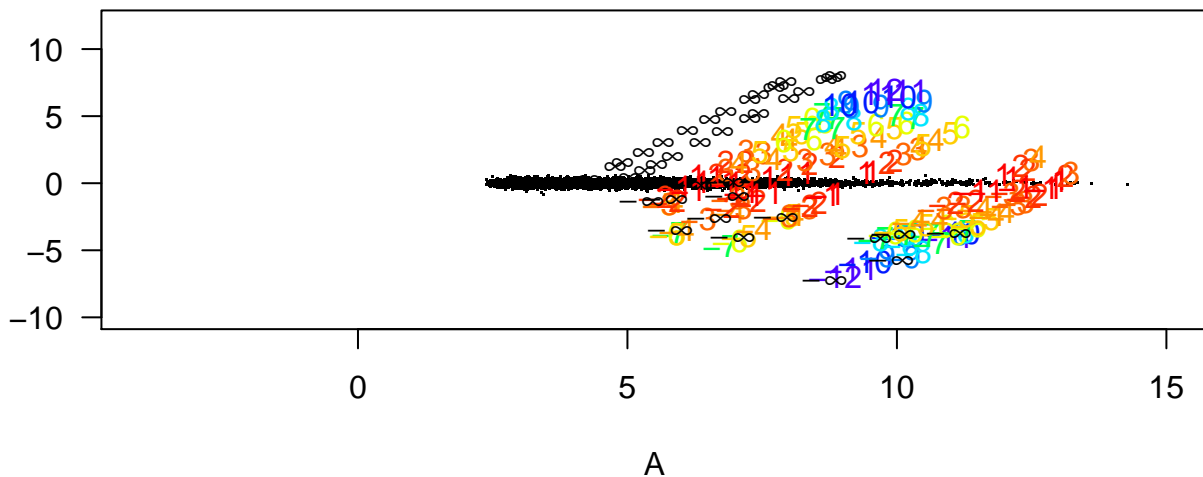
**Figure 6b**



## MAS 5.0

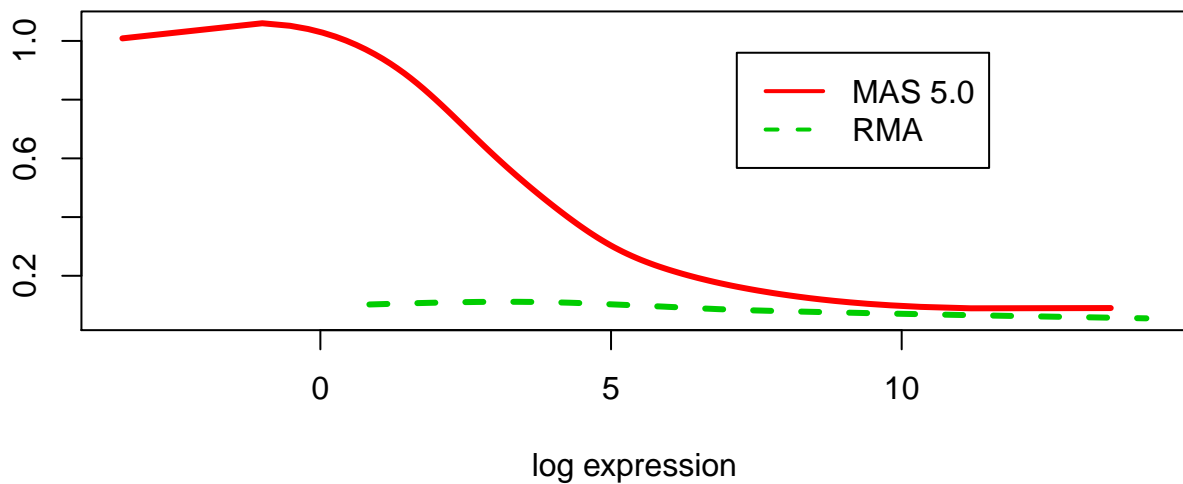


## RMA



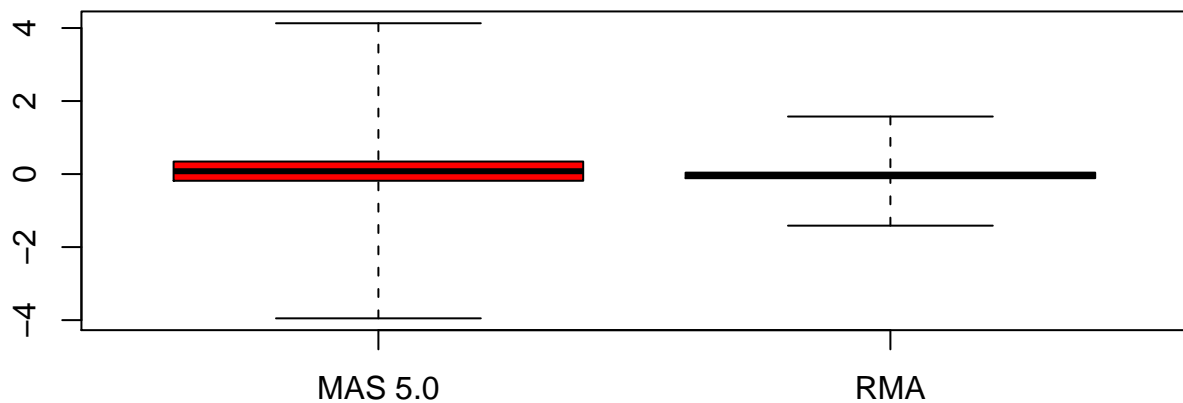
**Figure 2**

standard error across replicates

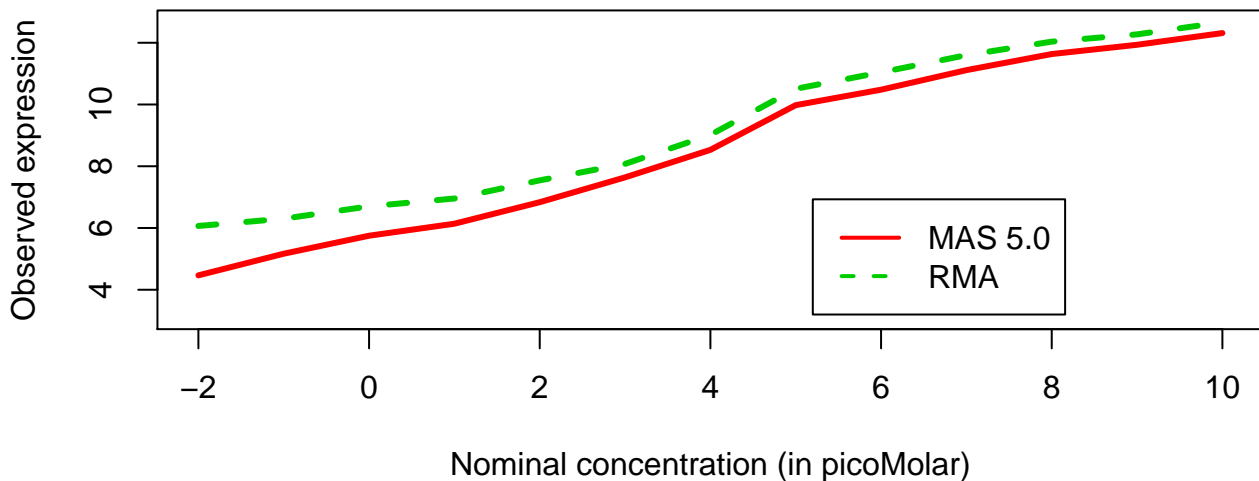


**Figure 3**

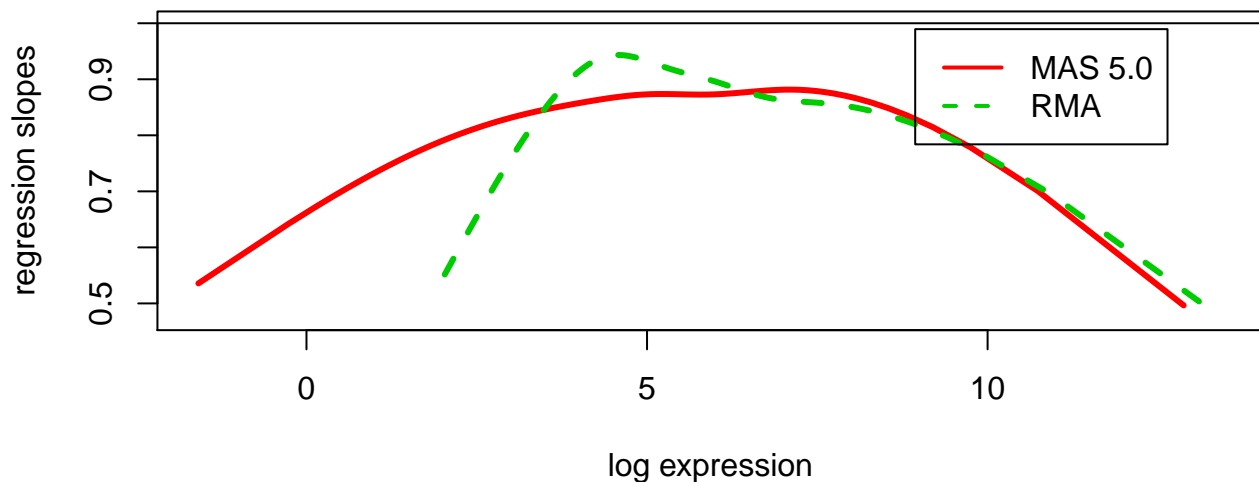
Difference between log fold changes



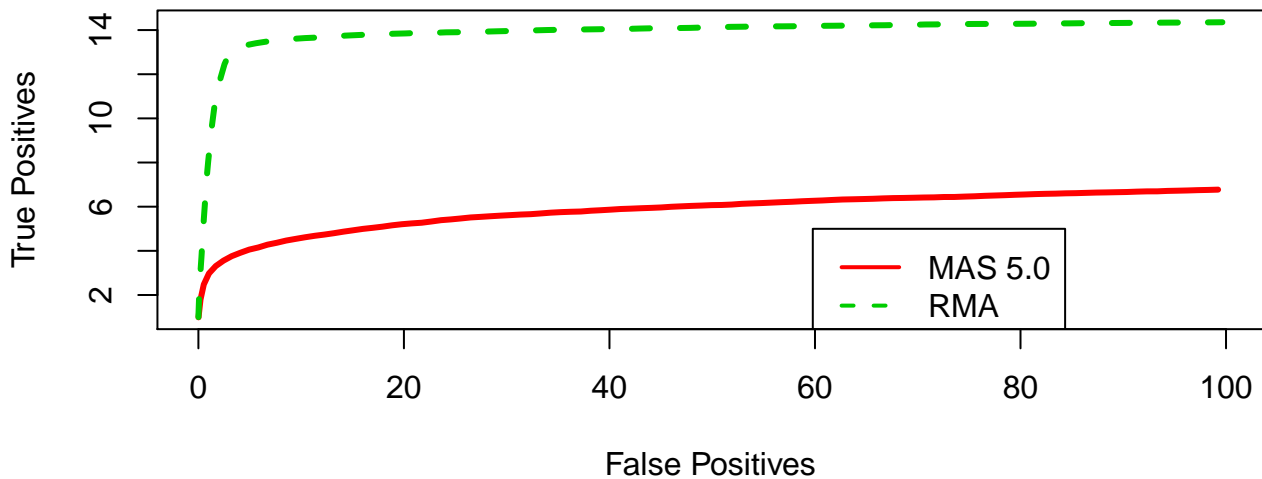
**Figure 4a**



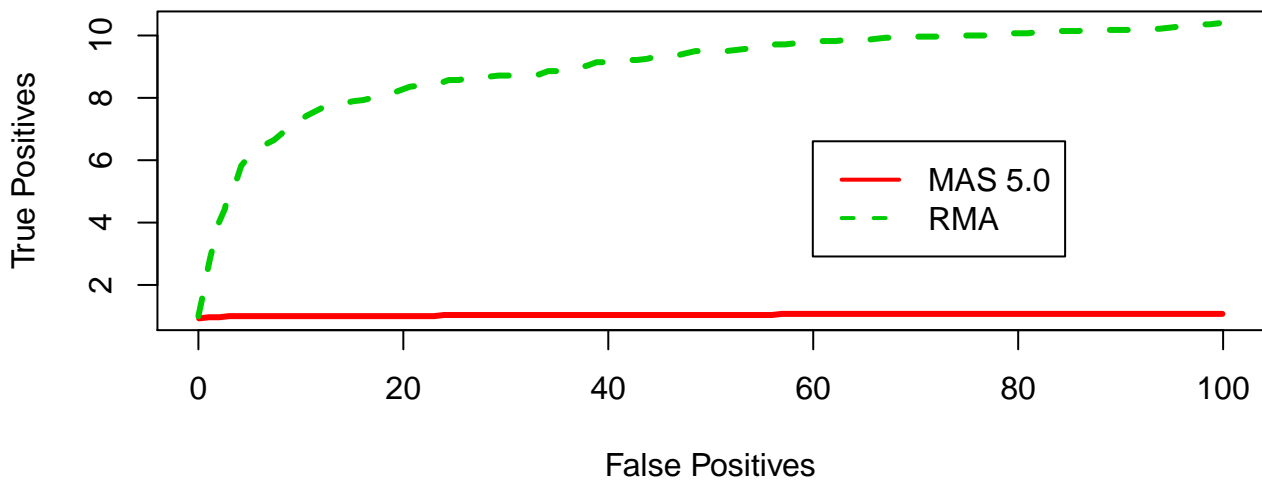
**Figure 4b**



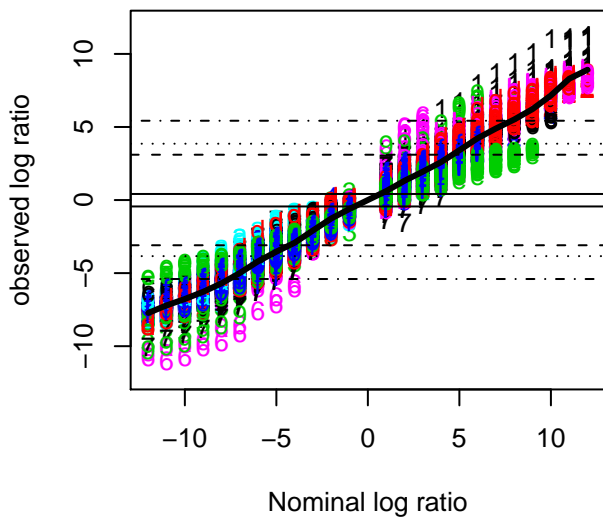
**Figure 5a**



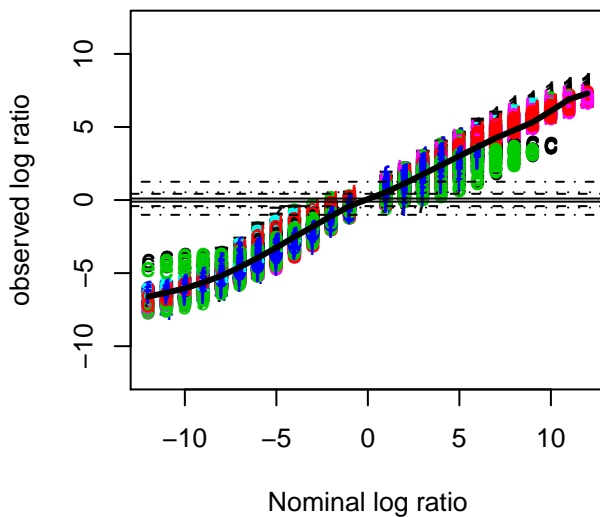
**Figure 5b**



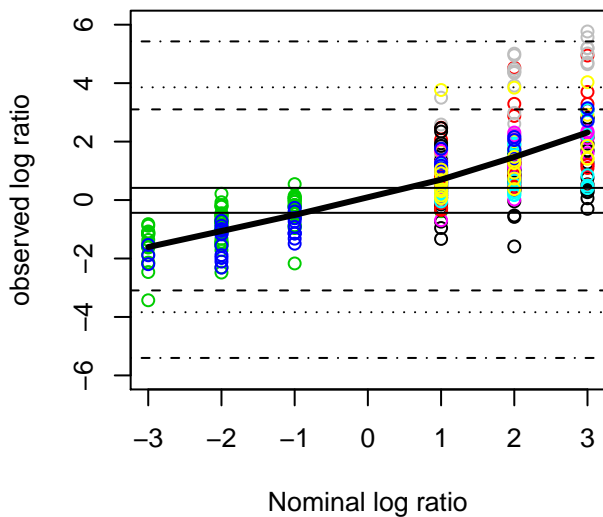
**a) MAS 5.0**



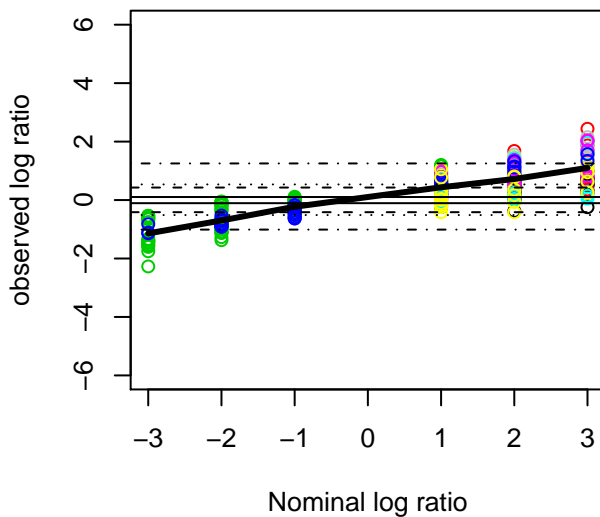
**a) RMA**



**b) MAS 5.0**

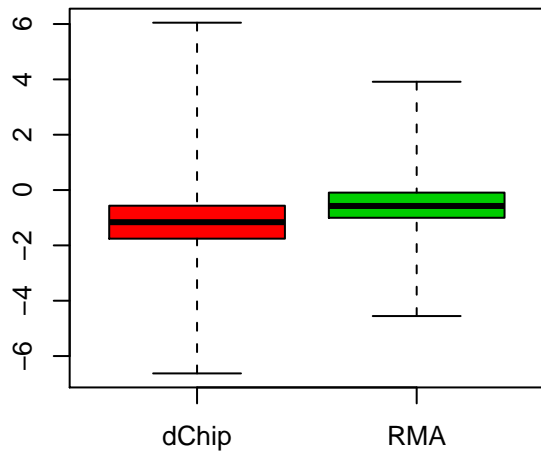


**b) RMA**



**Figure 7**

Log ratio of nominal SD and observed SD



**Figure 7**

Log (Nominal SD/Observed SD)

