

# cummeRbund: Visualization and Exploration of Cufflinks High-throughput Sequencing Data

Loyal A. Goff, Cole Trapnell

February 18, 2012

## Contents

<b>1</b>	<b>Requirements</b>	<b>2</b>
<b>2</b>	<b>Introduction</b>	<b>2</b>
<b>3</b>	<b>CummeRbund Classes</b>	<b>2</b>
3.1	CuffSet Class . . . . .	2
3.2	CuffData Class . . . . .	2
3.3	CuffDist Class . . . . .	3
3.4	CuffFeatureSet Class . . . . .	3
3.5	CuffFeature Class . . . . .	4
<b>4</b>	<b>Reading cuffdiff output</b>	<b>5</b>
4.1	Adding additional feature annotation . . . . .	7
<b>5</b>	<b>Global statistics</b>	<b>7</b>
<b>6</b>	<b>Accessing Data</b>	<b>13</b>
6.1	Writing your own SQL accessors . . . . .	15
<b>7</b>	<b>Creating Gene Sets</b>	<b>17</b>
7.1	Geneset level plots . . . . .	17
<b>8</b>	<b>Individual Genes</b>	<b>24</b>
8.1	Gene-level plots . . . . .	25
<b>9</b>	<b>Data Exploration</b>	<b>28</b>
9.1	Creating gene sets from significantly regulated genes . . . . .	28
9.2	Partitioning . . . . .	29
9.3	Specificity . . . . .	31
9.4	Finding similar genes . . . . .	32
<b>10</b>	<b>Miscellaneous</b>	<b>34</b>

<b>11 Known Issues</b>	<b>35</b>
<b>12 Session info</b>	<b>36</b>

## 1 Requirements

- Cufflinks  $\geq$  v1.1.0 (Note: as of the release of this package, the current version of cufflinks is 1.3.3. While this package will work with  $>$ v1.1, we recommend updating your cufflinks prior to using cummeRbund)
- R  $\geq$  v2.7.0
- Packages:
  - RSQLite
  - ggplot2
  - reshape2
  - plyr

## 2 Introduction

cummeRbund is a visualization package for Cufflinks high-throughput sequencing data. The base class, *cuffSet* is a 'pointer' to cufflinks data that are stored out-of-memory in a sqlite database.

## 3 CummeRbund Classes

### 3.1 CuffSet Class

A pointer class to control access to the sqlite tables holding the Cufflinks data. The primary slot is DB which contains the RSQLite connection object. This can be accessed using the *DB()* accessor. The additional slots (genes, isoforms, TSS, and CDS) are each instances of the *CuffData* class and are pointers to sets of tables for each data subtype. They can be accessed with similar accessor wrappers. This is the default class created by *readCufflinks*. By default, *CuffData* accessor methods applied to a *CuffSet* class will operate on the 'genes' slot.

### 3.2 CuffData Class

The *CuffData* class is also a pointer class to the SQL backend, but each instance is specific for a data subtype (genes, isoforms, TSS, CDS). Again, there is an DB slot (accessible using *DB()*) that contains the RSQLite connection object. There are several accessor, setter, and plotting methods that allow for global analysis of all features within a *CuffData* class. Subsetting is currently being

re-written, however, it is primarily done through the 'gene\_id' field. Available slots for the `CuffData` class are:

- DB: RSQlite connection object
- tables: A *list* of tables in the SQLite DB that contain the cufflinks data.
- filters: A *list* of filters for subsetting (not implemented yet).
- type: A *character* field describing the data (ie. 'genes', 'isoforms', 'TSS', 'CDS', 'other')
- idField: The name of the identifying index field for this object (eg. 'gene\_id' for type='gene', or 'isoform\_id' for type='isoform')

Making the best use of either the `CuffSet` or `CuffData` classes will enable you to keep the entire dataset out of memory and significantly improve performance for large cufflinks datasets.

### 3.3 CuffDist Class

The *CuffDist* class is an pointer class that contains the results of the various 'distribution tests' performed by cuffdiff. These include differential promoter usage, differential splicing, and differential CDS usage. These are independent tests from the differential analysis of gene-, isoform-, TSS-, and CDS-level features and therefore have their own container type to distinguish them as such. The 'promoters', 'relCDS', and 'splicing' slots of a *CuffSet* class are all *CuffDist* instances.

Available slots for the `CuffDist` class are:

- DB: RSQlite connection object
- tables: A *list* of tables in the SQLite DB that contain the distribution test data.
- type: A *character* field describing the data (ie. 'promoters', 'relCDS', 'splicing')
- idField: The name of the identifying index field for this object (eg. 'TSS\_group\_id' for type='promoters', or 'CDS\_id' for type='relCDS', etc.)

### 3.4 CuffFeatureSet Class

The *CuffFeatureSet* class is a data-storage container that holds all available data for a pre-determined list of features. Slots for FPKM data, differential regulation data, and feature-level annotation are all available. Unlike the previous classes, this class contains no connection information to the SQL database, but rather contains several slots with *data.frame* objects storing multiple-features worth of information. There are available accessors, and plotting methods that are designed to present multiple-features worth of information (eg. heatmaps, scatterplots, etc) Available slots for a *CuffFeatureSet* object include:

- **annotation:** Holds all feature-level annotation information for all features in object.
- **fpkm:** A data frame of FPKM data across all samples, for all features in object.
- **diff:** A data frame of differential expression/regulation data for all features in object.

A specialized sub-class of *CuffFeatureSet* is the *CuffGeneSet* class. This subclass adds additional slots to contain all isoforms, TSS, and CDS information for a given set of gene\_ids. The *CuffGeneSet* class is designed to aggregate all relevant information for a set of genes into one object for easy analysis and/or manipulation. The *CuffGeneSet* object adds the following slots:

- **ids:** A 'character' list of all gene\_ids used in object.
- **isoforms:** A *CuffFeatureSet* object for all isoforms of genes in object.
- **TSS:** A *CuffFeatureSet* object for all TSS of genes in object.
- **CDS:** A *CuffFeatureSet* object for all CDS of genes in object.

### 3.5 CuffFeature Class

The *CuffFeature* class is designed for single-feature-level data analysis and plotting. The methods available for this object are designed to analyze or visualize information about a specific feature. This is a 'data' object, as opposed to a 'pointer' object to the database backend. There is a validity requirement that a *CuffFeature* object only point to data from a single feature. Available slots for a *CuffFeature* object include:

- **annotation:** Holds feature-level annotation information for a given feature.
- **fpkm:** A data frame of FPKM data across all samples for a given feature.
- **diff:** A data frame of differential expression/regulation data for a given feature.

A specialized sub-class of *CuffFeature* is the *CuffGene* class. This subclass adds additional slots to contain all isoform, TSS, and CDS information for a given gene. The *CuffGene* object adds the following slots:

- **id:** The common 'gene\_id' for all data in object
- **isoforms:** A *CuffFeature* object for all isoforms of a given gene.
- **TSS:** A *CuffFeature* object for all TSS of a given gene.
- **CDS:** A *CuffFeature* object for all CDS of a given gene.

## 4 Reading cuffdiff output

cummeRbund was designed to process the multi-file output format for a 'cuffdiff' differential expression analysis. In this type of analysis, a user will use a reference .gtf file (either known annotation or a .gtf file created from a cufflinks assembly or merge of assemblies) and quantitate the expression values and differential regulation of the annotation(s) in the .gtf file across two or more SAM/BAM files. By design, cuffdiff produces a number of output files that contain test results for changes in expression at the level of transcripts, primary transcripts, and genes. It also tracks changes in the relative abundance of transcripts sharing a common transcription start site, and in the relative abundances of the primary transcripts of each gene. Tracking the former allows one to see changes in splicing, and the latter lets one see changes in relative promoter use within a gene.

Note: Early versions of Cuffdiff required that transcripts in the input GTF be annotated with certain attributes in order to look for changes in primary transcript expression, splicing, coding output, and promoter use. This is no longer the case with  $\geq v1.1.1$  of cummeRbund, however we still recommend the use of both the following attributes in your GTF file to enable all downstream features of cummeRbund.

These attributes are:

- `tss_id`: The ID of this transcript's inferred start site. Determines which primary transcript this processed transcript is believed to come from. Cuffcompare appends this attribute to every transcript reported in the .combined.gtf file.
- `p_id`: The ID of the coding sequence this transcript contains. This attribute is attached by Cuffcompare to the .combined.gtf records only when it is run with a reference annotation that include CDS records. Further, differential CDS analysis is only performed when all isoforms of a gene have `p_id` attributes, because neither Cufflinks nor Cuffcompare attempt to assign an open reading frame to transcripts.

cuffdiff calculates the FPKM of each transcript, primary transcript, and gene in each sample. Primary transcript and gene FPKMs are computed by summing the FPKMs of transcripts in each primary transcript group or gene group. The results are output in FPKM tracking files, the structure of which can be found in the cufflinks manual.

There are four FPKM tracking files:

- *isoforms.fpkm\_tracking* Transcript FPKMs
- *genes.fpkm\_tracking* Gene FPKMs. Tracks the summed FPKM of transcripts sharing each `gene_id`

- *cds.fpkm\_tracking* Coding sequence FPKMs. Tracks the summed FPKM of transcripts sharing each p\_id, independent of tss\_id
- *tss\_groups.fpkm\_tracking* Primary transcript FPKMs. Tracks the summed FPKM of transcripts sharing each tss\_id

cuffdiff also performs differential expression tests between supplied conditions. This tab delimited file lists the results of differential expression testing between samples for spliced transcripts, primary transcripts, genes, and coding sequences. For detailed file structure see cufflinks manual.

Four .diff files are created:

- *isoform\_exp.diff* Transcript differential FPKM.
- *gene\_exp.diff* Gene differential FPKM. Tests difference in the summed FPKM of transcripts sharing each gene\_id
- *tss\_group\_exp.diff* Primary transcript differential FPKM. Tests differences in the summed FPKM of transcripts sharing each tss\_id
- *cds\_exp.diff* Coding sequence differential FPKM. Tests differences in the summed FPKM of transcripts sharing each p\_id independent of tss\_id

In addition, cuffdiff also performs differential splicing, CDS usage, and promoter usage tests for each gene across conditions:

- *splicing.diff* Differential splicing tests.
- *CDS.diff* Differential coding output.
- *promoters.diff* Differential promoter use.

All of these output files are related to each other through their various tracking\_ids, but parsing through individual files to query for important result information requires both a good deal of patience and a strong grasp of command-line text manipulation. Enter cummeRbund, an R solution to aggregate, organize, and help visualize this multi-layered dataset.

One of the principle benefits of using cummeRbund is that data are stored in a SQLite database. This allows for out-of-memory analysis of data, quick retrieval, and only a one-time cost to setup the tables. By default, cummeRbund assumes that all output files from cuffdiff are in the current working directory. To read these files, populate the 'cuffData.db' database backend, and return the *CuffSet* pointer object, you can do the following.

```
> library(cummeRbund)

> cuff <- readCufflinks(dir=system.file("extdata", package="cummeRbund"))
> cuff
```

```
CuffSet instance with:
  3 samples
  400 genes
  1203 isoforms
  575 TSS
  545 CDS
  960 promoters
  1725 splicing
  696 relCDS
```

Again, by default *dir* is assumed to be the current working directory and `cuff<-readCufflinks()` should work if all appropriate files are in the current working directory. Should you need to rebuild the SQLite backend for any reason, you can add the option *rebuild=T* to *readCufflinks*. Once the database is created, *readCufflinks* will default to using the SQL backend and should not need to rebuild this database. Each R session should begin with a call to *readCufflinks* so as to initialize the database connection and create an object with the appropriate RSQLite connection information.

## 4.1 Adding additional feature annotation

Gene- or feature-level annotation can be permanently added to the database tables for future querying. If you have a data.frame where the first column contains the 'tracking\_id' (eg. 'gene\_id' for genes, 'isoform\_id' for isoforms, etc). You can easily add feature level annotation using the `addFeatures()` function:

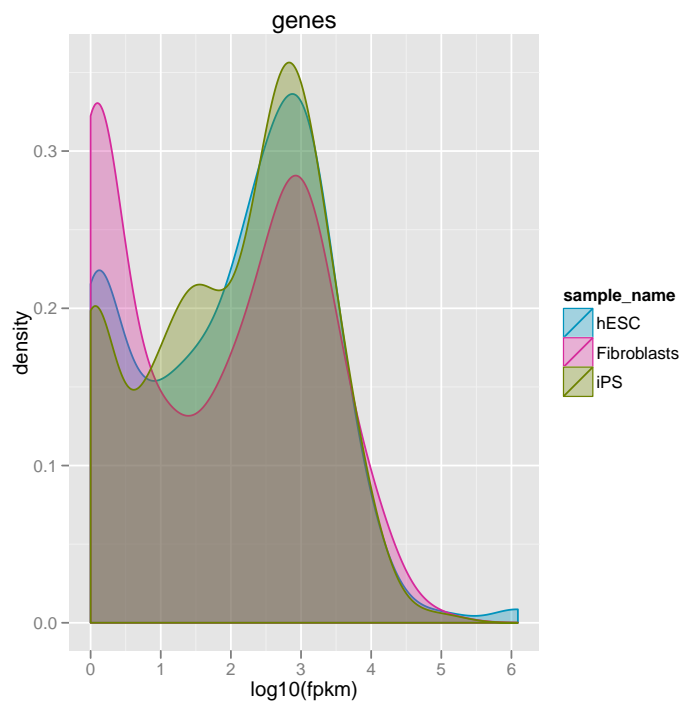
```
> #annot<-read.table("gene_annotation.tab",sep="\t",header=T,na.string="-")
> #addFeatures(cuff,annot,level="genes")
```

By default, features added to a *CuffSet* object are assumed to be gene-level annotations, but the level can be selected using the argument *level*. Features added to a *CuffData* object are assumed to be of the same type as the 'type' value for that given object (e.g. gene-level features for 'genes', isoform-level features for isoforms, etc.)

## 5 Global statistics

Several plotting methods are available that allow for quality-control or global analysis of cufflinks data. For example, to assess the distributions of FPKM scores across samples, you can use the *csDensity* plot (Figure 1).

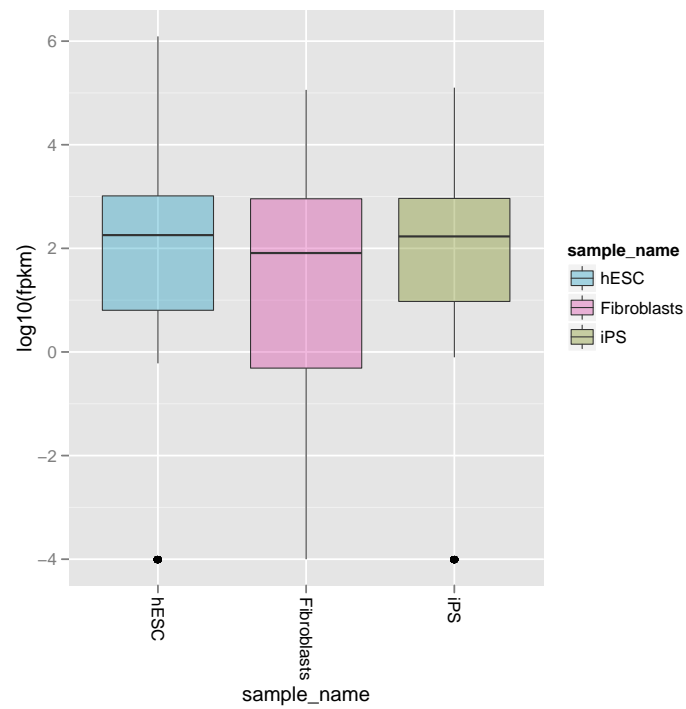
```
> dens<-csDensity(genes(cuff))
> dens
```



Boxplots can be visualized using the *csBoxplot* method (Figure 2).

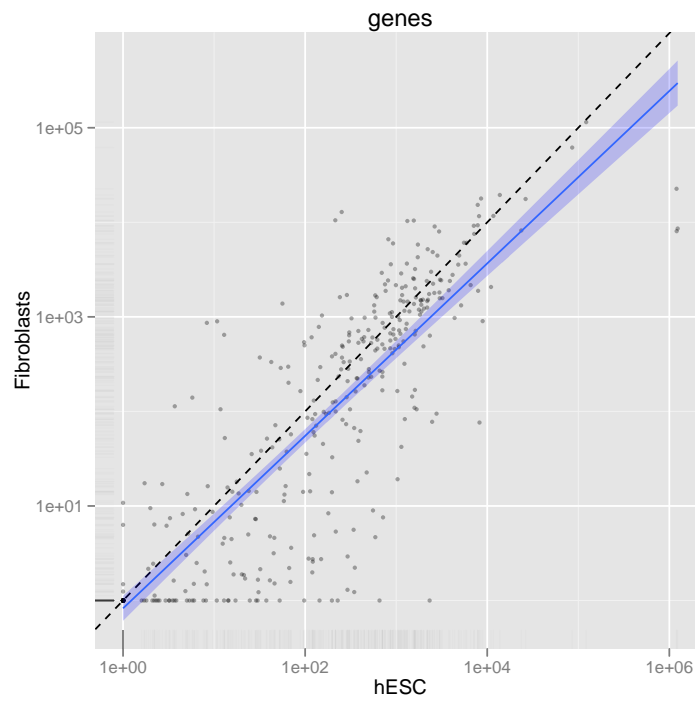
```
> b<-csBoxplot(genes(cuff))  
> b
```





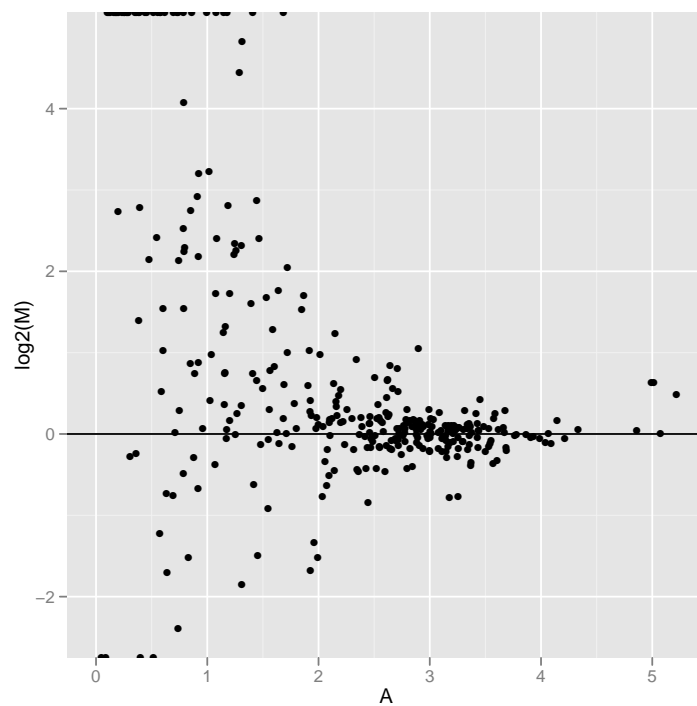
Pairwise comparisons can be made by using *csScatter*. You must specify the sample names to use for the *x* and *y* axes:

```
> s<-csScatter(genes(cuff),"hESC","Fibroblasts",smooth=T)
> s
```



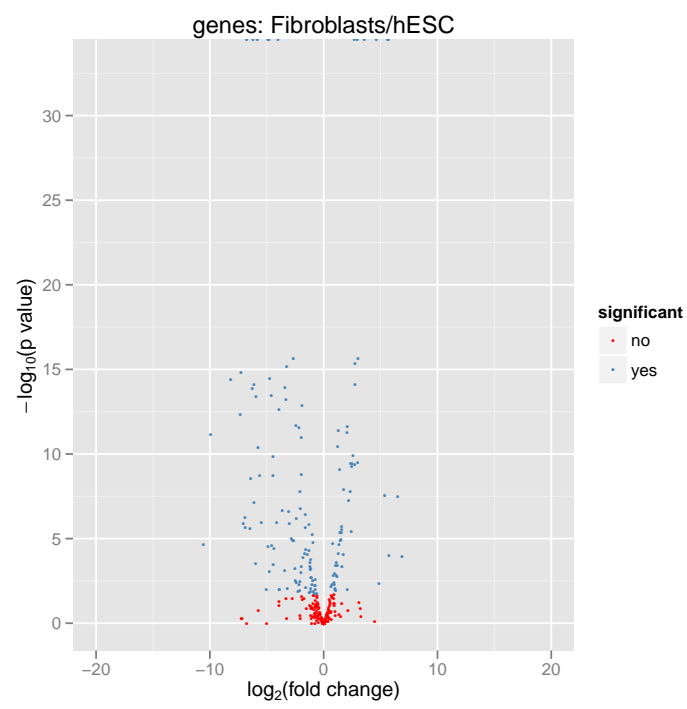
MvsA plots can be useful to determine any systematic bias that may be present between conditions. The CuffData method *MAplot()* can be used to examine these intensity vs fold-change plots. You must specify the sample names to use for the pairwise comparison with *x* and *y*:

```
> m<-MAplot(genes(cuff),"hESC","Fibroblasts")
> m
```



Volcano plots are also available for the *CuffData* objects. Again, you must specify the comparisons by sample name.

```
> v<-csVolcano(genes(cuff),"hESC","Fibroblasts")  
> v
```



## 6 Accessing Data

Feature-level information can be accessed directly from a *CuffData* object using the *fpkm*, *diffData*, or *features* methods:

```
> gene.features<-features(genes(cuff))
> head(gene.features)
```

	gene_id	class_code	nearest_ref_id	gene_short_name
1	XLOC_000001	<NA>	<NA>	<NA>
2	XLOC_000002	<NA>	<NA>	OR4F5
3	XLOC_000003	<NA>	<NA>	<NA>
4	XLOC_000004	<NA>	<NA>	<NA>
5	XLOC_000005	<NA>	<NA>	<NA>
6	XLOC_000006	<NA>	<NA>	OR4F16

	locus	length	coverage	gene_id
1	chr1:11873-29961	NA	NA	<NA>
2	chr1:69090-70008	NA	NA	<NA>
3	chr1:321083-321114	NA	NA	<NA>
4	chr1:321145-321223	NA	NA	<NA>
5	chr1:322036-328580	NA	NA	<NA>
6	chr1:367658-368595	NA	NA	<NA>

```
> gene.fpkm<-fpkm(genes(cuff))
> head(gene.fpkm)
```

	gene_id	sample_name	fpkm	conf_hi	conf_lo
1	XLOC_000001	Fibroblasts	16.401100	428.14700	0
2	XLOC_000001	hESC	0.723836	3.01108	0
3	XLOC_000001	iPS	54.067200	1402.31000	0
4	XLOC_000002	Fibroblasts	0.000000	0.00000	0
5	XLOC_000002	hESC	0.000000	0.00000	0
6	XLOC_000002	iPS	0.000000	0.00000	0

	quant_status
1	LOWDATA
2	OK
3	LOWDATA
4	OK
5	OK
6	OK

```
> isoform.fpkm<-fpkm(isoforms(cuff))
> head(isoform.fpkm)
```

	isoform_id	sample_name	fpkm	conf_hi	conf_lo
1	TCONS_00000001	Fibroblasts	11.910700	19.96650	3.85498
2	TCONS_00000001	hESC	0.000000	0.00000	0.00000

```

3 TCONS_00000001      iPS  9.563700 23.68410 0.00000
4 TCONS_00000002 Fibroblasts 0.000000 8.55378 0.00000
5 TCONS_00000002      hESC  0.723836 3.01108 0.00000
6 TCONS_00000002      iPS 32.934400 47.93760 17.93130

```

```

quant_status
1      OK
2      OK
3  LOWDATA
4      OK
5      OK
6      OK

```

```

> gene.diff<-diffData(genes(cuff))
> head(gene.diff)

```

	gene_id	sample_1	sample_2	status	value_1	value_2
1	XL0C_000001	hESC	Fibroblasts	OK	7.23836e-01	16.4011
2	XL0C_000002	hESC	Fibroblasts	NOTEST	0.00000e+00	0.0000
3	XL0C_000003	hESC	Fibroblasts	NOTEST	0.00000e+00	0.0000
4	XL0C_000004	hESC	Fibroblasts	OK	1.20000e+06	22616.4000
5	XL0C_000005	hESC	Fibroblasts	OK	1.13903e+03	41.1644
6	XL0C_000006	hESC	Fibroblasts	NOTEST	0.00000e+00	0.0000

	log2_fold_change	test_stat	p_value	q_value	significant
1	4.50198	-0.246654	0.805176	0.893616	no
2	0.00000	0.000000	1.000000	1.000000	no
3	0.00000	0.000000	1.000000	1.000000	no
4	-5.72952	1.310270	0.190105	0.300329	no
5	-4.79027	10.857600	0.000000	0.000000	yes
6	0.00000	0.000000	1.000000	1.000000	no

Vectors of sample names and feature names are available by using the *samples* and *featureNames* methods:

```

> sample.names<-samples(genes(cuff))
> head(sample.names)

[1] "hESC"      "Fibroblasts" "iPS"

> gene.featurenames<-featureNames(genes(cuff))
> head(gene.featurenames)

[1] "XL0C_000001" "XL0C_000002" "XL0C_000003" "XL0C_000004"
[5] "XL0C_000005" "XL0C_000006"

```

To facilitate Bioconductor-like operations, an 'FPKM-matrix' can be returned easily using the *fpkmMatrix* method:

```

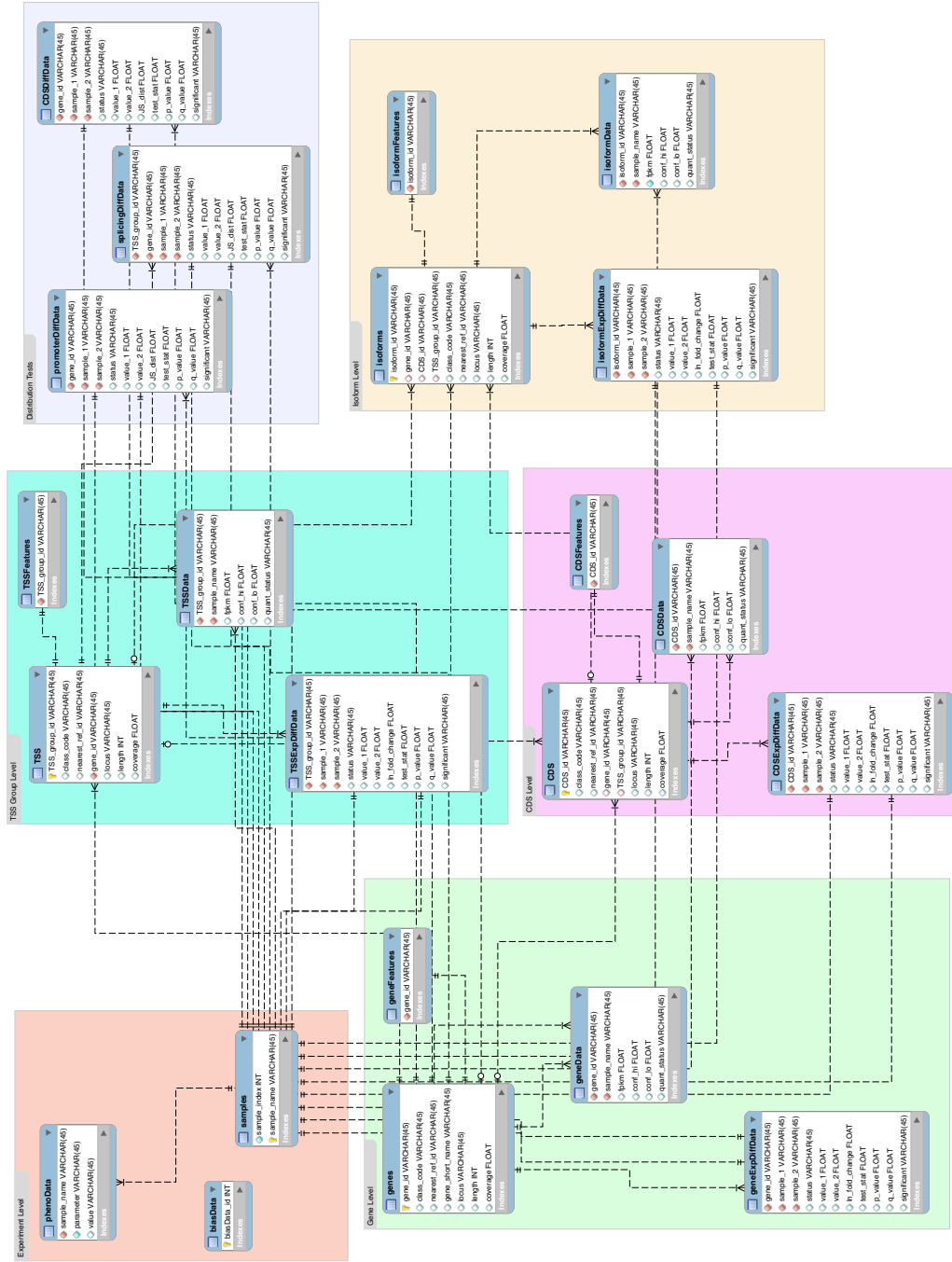
> gene.matrix<-fpkmMatrix(genes(cuff))
> head(gene.matrix)

```

	hESC Fibroblasts		iPS
XL0C_000001	7.23836e-01	16.4011	54.06720
XL0C_000002	0.00000e+00	0.0000	0.00000
XL0C_000003	0.00000e+00	0.0000	0.00000
XL0C_000004	1.20000e+06	22616.4000	0.00000
XL0C_000005	1.13903e+03	41.1644	944.30800
XL0C_000006	0.00000e+00	0.0000	9.00455

## 6.1 Writing your own SQL accessors

Since the cuffData.db is a SQLite database backend, if you are familiar with SQL and/or RSQLite query construction, you can simply design your own SQL queries to access the data that you are after.





## 7 Creating Gene Sets

Gene Sets (stored in a *CuffGeneSet* object) can be created using the *getGenes* method on a *CuffSet* object. You must first create a vector of 'gene\_id' or 'gene\_short\_name' values to identify the genes you wish to select:

```
> data(sampleData)
> myGeneIds<-sampleIDs
> myGeneIds

[1] "XLOC_001363" "XLOC_001297" "XLOC_001339" "XLOC_000132"
[5] "XLOC_001265" "XLOC_000151" "XLOC_001359" "XLOC_000069"
[9] "XLOC_000170" "XLOC_000105" "XLOC_001262" "XLOC_001348"
[13] "XLOC_001411" "XLOC_001369" "XLOC_000158" "XLOC_001370"
[17] "XLOC_001263" "XLOC_000115" "XLOC_000089" "XLOC_001240"

> myGenes<-getGenes(cuff,myGeneIds)
> myGenes

CuffGeneSet instance for 20 genes

Slots:
      annotation
      fpkm
      diff
      isoforms      CuffFeatureSet instance of size 45
      TSS           CuffFeatureSet instance of size 18
      CDS           CuffFeatureSet instance of size 31
      promoters     CuffFeatureSet instance of size 20
      splicing      CuffFeatureSet instance of size 18
      relCDS        CuffFeatureSet instance of size 20
```

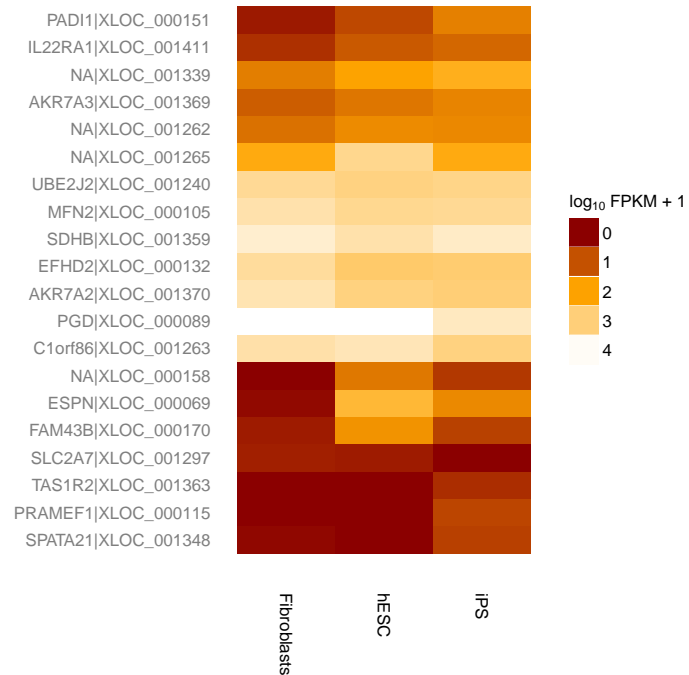
The same *fpkm*, *fpkmMatrix*, *features*, *diffData*, *samples*, and *featureNames* are available for instances of the *CuffGeneSet* class, but additional accessor methods are available for the *promoters*, *relCDS*, and *splicing* slot data as well.

### 7.1 Geneset level plots

There are several plotting functions available for gene-set-level visualization:

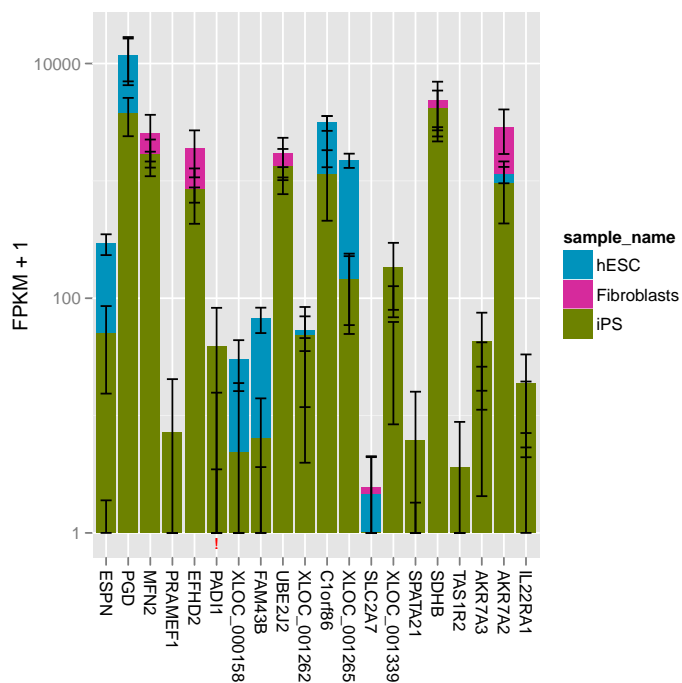
The *csHeatmap()* function is a plotting wrapper that takes as input either a *CuffGeneSet* or a *CuffFeatureSet* object (essentially a collection of genes and/or features) and produces a heatmap of FPKM expression values. The 'cluster' argument can be used to re-order either 'row', 'column', or 'both' dimensions of this matrix. By default, the Jensen-Shannon distance is used as the clustering metric, however, any function that produces a *dist* object can be passed to the 'cluster' argument as well.

```
> h<-csHeatmap(myGenes,cluster='both')
> h
```



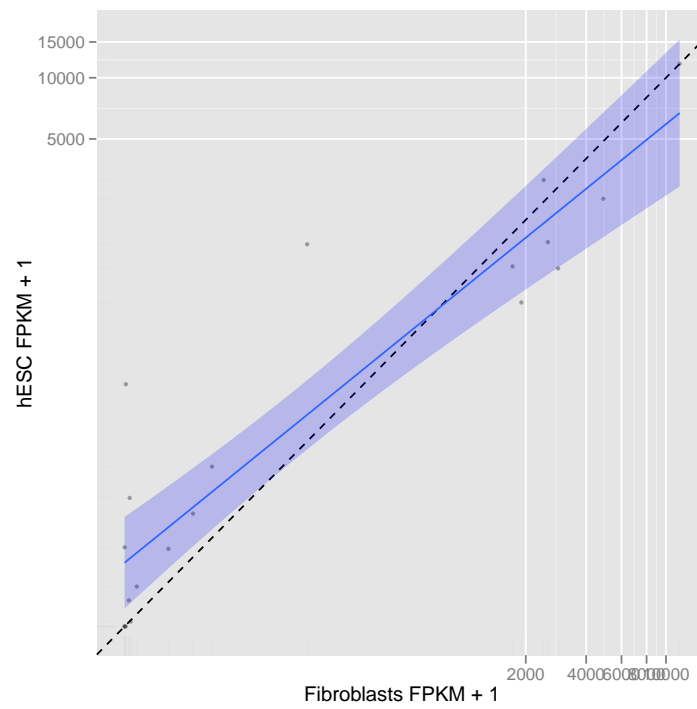
If you prefer barplots over heatmaps for genesets (although this is not necessarily recommended for large gene sets). You can use the *expressionBarplot()* method on a *CuffFeatureSet* or a *CuffGeneSet* object.

```
> b<-expressionBarplot(myGenes)
> b
```



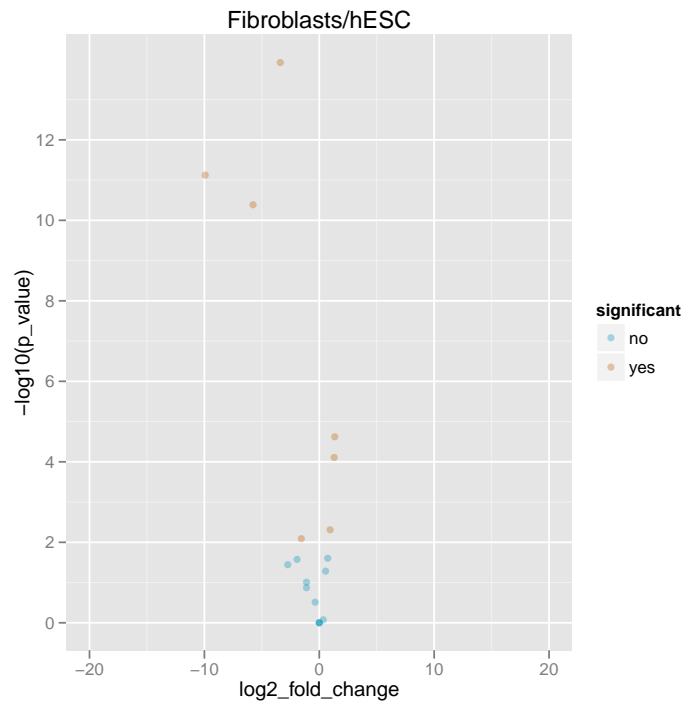
The *csScatter()* method can be used to produce scatter plot comparisons between any two conditions.

```
> s<-csScatter(myGenes,"Fibroblasts","hESC",smooth=T)
> s
```



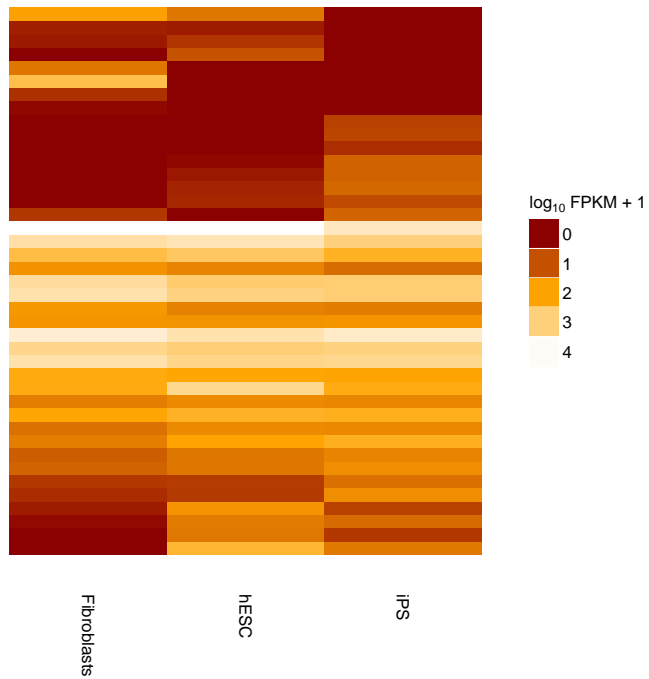
The volcano plot is a useful visualization to compare fold change between any two conditions and significance (-log P-values).

```
> v<-csVolcano(myGenes,"Fibroblasts","hESC")
> v
```



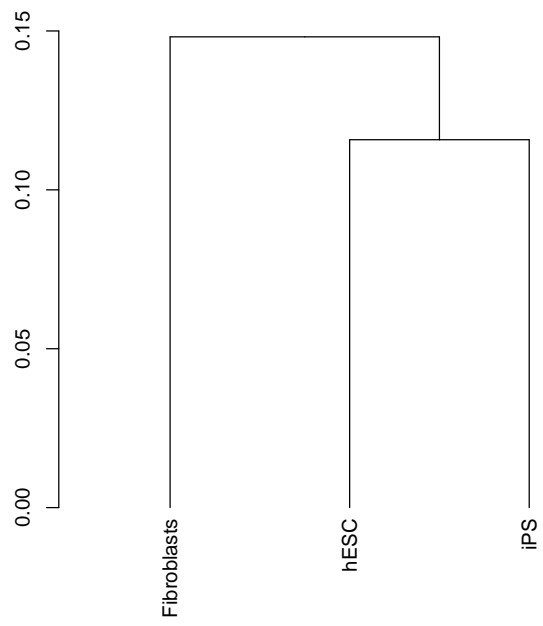
Similar plots can be made for all sub-level features of a *CuffGeneSet* class by specifying which slot you would like to plot (eg. *isoforms(myGenes)*, *TSS(myGenes)*, *CDS(myGenes)*).

```
> ih<-csHeatmap(isoforms(myGenes),cluster='both',labRow=F)
> ih
```



Dendrograms can provide insight into the relationships between conditions for various genesets (e.g. significant genes used to draw relationships between conditions). As of v1.1.3 the method *csDendro()* can be used to plot a dendrogram based on Jensen-Shannon distances between conditions for a given *CuffFeatureSet* or *CuffGeneSet*.

```
> den<-csDendro(myGenes)
```



## 8 Individual Genes

An individual CuffGene object can be created by using the `getGene` function for a given 'gene\_id' or 'gene\_short\_name'.

```
> myGeneId<-"PINK1"  
> myGene<-getGene(cuff,myGeneId)  
> myGene
```

CuffGene instance for gene PINK1

Short name: PINK1

Slots:

```
      annotation  
      fpkm  
      diff  
      isoforms      CuffFeature instance of size 2  
      TSS           CuffFeature instance of size 2  
      CDS           CuffFeature instance of size 2
```

```
> head(fpkm(myGene))
```

	gene_id	sample_name	fpkm	conf_hi	conf_lo
1	XLOC_000172	Fibroblasts	2919.340	4002.960	1835.730
2	XLOC_000172	hESC	693.465	813.869	573.062
3	XLOC_000172	iPS	1598.040	2282.380	913.710

quant\_status

1	OK
2	OK
3	OK

```
> head(fpkm(isoforms(myGene)))
```

	isoform_id	sample_name	fpkm	conf_hi	conf_lo
1	TCONS_00000480	Fibroblasts	2101.640	3111.330	1091.9400
2	TCONS_00000480	hESC	573.512	668.688	478.3370
3	TCONS_00000480	iPS	1598.040	2282.380	913.7100
4	TCONS_00000481	Fibroblasts	817.704	1391.700	243.7120
5	TCONS_00000481	hESC	119.953	152.675	87.2311
6	TCONS_00000481	iPS	0.000	0.000	0.0000

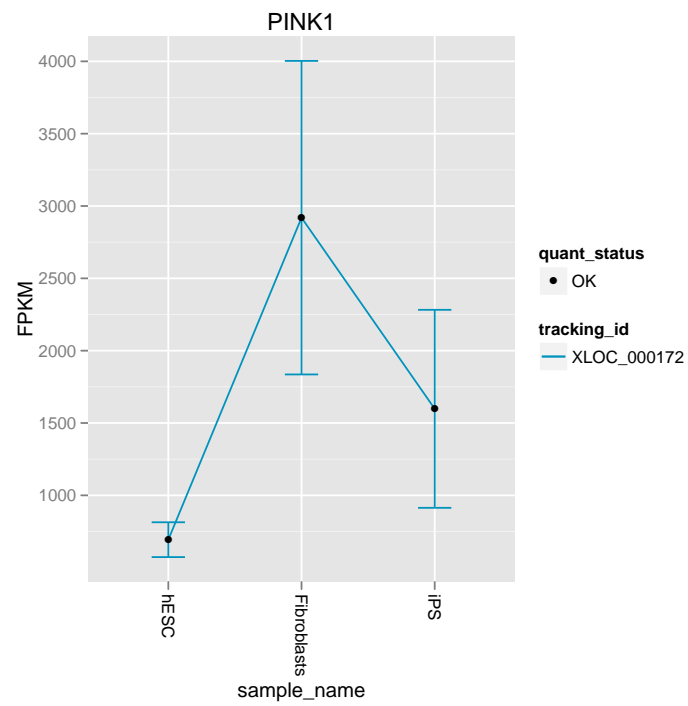
quant\_status

1	OK
2	OK
3	OK
4	OK
5	OK
6	OK

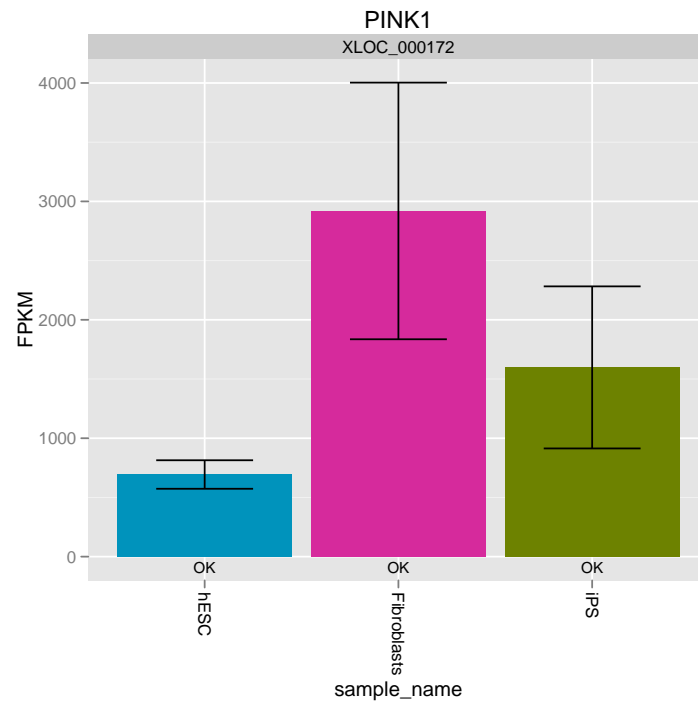


## 8.1 Gene-level plots

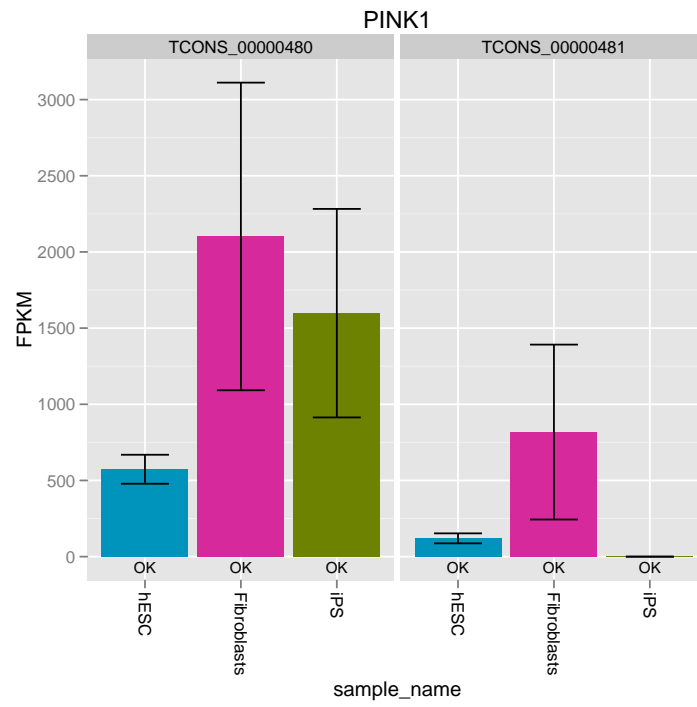
```
> gl<-expressionPlot(myGene)
> gl
```



```
> gb<-expressionBarplot(myGene)
> gb
```



```
> igb<-expressionBarplot(isoforms(myGene))  
> igb
```



## 9 Data Exploration

The *cummeRbund* package is more than just a visualization tool as well. We are working to implement several different means of data exploration from gene and condition clustering, finding features with similar expression profiles, as well as incorporating Gene Ontology analysis.

### 9.1 Creating gene sets from significantly regulated genes

One of the primary roles of a differential expression analysis is to conduct significance tests on each feature (genes, isoforms, TSS, and CDS) for appropriate pairwise comparisons of conditions. The results of these tests (after multiple testing correction of course) can be used to determine which genes are differentially regulated. *cummeRbund* makes accessing the results of these significance tests simple via *getSig()*. This function takes a *CuffSet* object and will scan at various feature levels ('genes' by default) to produce a *vector* of feature IDs. By default *getSig()* outputs a vector of tracking IDs corresponding to all *genes* that reject the null hypothesis in any condition tested. The default feature type can be changed by adjusting the 'level' argument to *getSig()*. In addition, a alpha value can be provided on which to filter the resulting list (the default is 0.05 to match the default of *cuffdiff*).

```
> mySigGenes<-getSig(cuff,alpha=0.05,level='genes')
> head(mySigGenes)

[1] "XLOC_000005" "XLOC_000014" "XLOC_000015" "XLOC_000016"
[5] "XLOC_000018" "XLOC_000025"

> length(mySigGenes)

[1] 220
```

By default *getSig()* outputs a vector of tracking IDs corresponding to all *genes* that reject the null hypothesis in any condition tested. The default feature type can be changed by adjusting the 'level' argument to *getSig()*. In addition, a alpha value can be provided on which to filter the resulting list (the default is 0.05 to match the default of *cuffdiff*). Significance results for specific pairwise comparisons can be retrieved as well by specifying the two conditions as 'x' and 'y'. In this case, p-values are adjusted to reduce the impact of multiple-testing correction when only one set of tests is being conducted.

```
> hESC_vs_iPS.sigIsoforms<-getSig(cuff,x='hESC',y='iPS',alpha=0.05,level='isoforms')
> head(hESC_vs_iPS.sigIsoforms)

[1] "TCONS_00000006" "TCONS_00000018" "TCONS_00000034"
[4] "TCONS_00000041" "TCONS_00000043" "TCONS_00000048"

> length(hESC_vs_iPS.sigIsoforms)
```

[1] 247

The values returned for each level of this list can be used as an argument to `getGenes`, to create a *CuffGeneSet* object of significantly regulated genes (or features).

Alternatively, you can use the `getSigTable()` method to return a full test-table of 'significant features' x 'pairwise tests' for all comparisons. Only features in which the null hypothesis can be rejected in at least one test are reported.

```
> mySigTable<-getSigTable(cuff,alpha=0.01,level='genes')
> head(mySigTable,20)
```

	FibroblastsvsiPS	hESCvsFibroblasts	hESCvsiPS
XLOC_000005	1	1	0
XLOC_000014	1	1	0
XLOC_000015	1	0	1
XLOC_000016	0	1	1
XLOC_000019	1	0	1
XLOC_000025	0	1	1
XLOC_000026	0	1	0
XLOC_000029	0	1	0
XLOC_000032	NA	1	0
XLOC_000034	0	1	1
XLOC_000035	0	1	0
XLOC_000043	0	1	0
XLOC_000044	1	1	0
XLOC_000048	0	1	0
XLOC_000050	1	1	0
XLOC_000054	1	1	0
XLOC_000055	0	1	0
XLOC_000060	0	1	0
XLOC_000063	1	1	0
XLOC_000064	1	1	1

## 9.2 Partitioning

K-means clustering is a useful tool that can be helpful in identifying clusters of genes with similar expression profiles. In fact, these profiles are learned from the data during the clustering. `csCluster()` uses the `pam()` method from the `clustering` package to perform the partitioning around medoids. In this case however, the distance metric used by default is the Jensen-Shannon distance instead of the default Euclidean distance. Prior to performing this particular partitioning, the user must choose the number of clusters (K) into which the expression profiles should be divided.

```
> ic<-csCluster(myGenes,k=4)
> head(ic$cluster)
```

```

XL0C_000069 XL0C_000089 XL0C_000105 XL0C_000115 XL0C_000132
          1             2             2             3             2
XL0C_000151
          4

```

```

> icp<-csClusterPlot(ic)
> icp

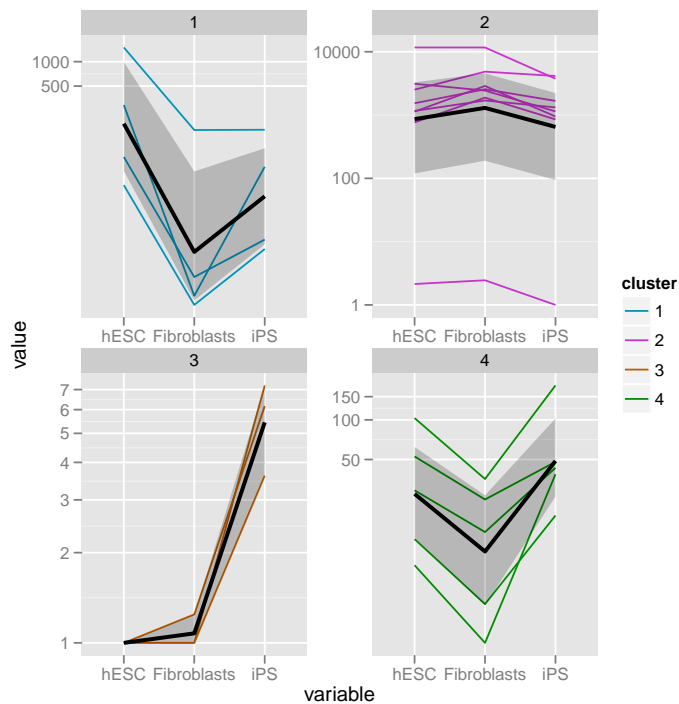
```

As of v1.1.1 of *cummeRbund*, the output of *csCluster* is a modified *pam* object. This replaces the default plotting behavior of the original *csCluster* plot to allow for further analysis of the clustering results. The original plotting behavior has been recapitulated in the *csClusterPlot()* method.

```

XL0C_000069 XL0C_000089 XL0C_000105 XL0C_000115 XL0C_000132
          1             2             2             3             2
XL0C_000151
          4

```



### 9.3 Specificity

In some cases, a researcher may be interested in identifying features that are 'condition-specific'. Or, more likely, producing an ordered list of genes based on their specificity for a given condition. We define a specificity score (S) as the following:

$$S_{g,i} = 1 - JSD(p_g, \hat{q}_i) \quad (1)$$

Where  $JSD$  is the Jensen-Shannon distance,  $p_g$  is the expression profile of a given gene  $g$  expressed as a density (probability) of  $\log_{10}FPKM + 1$ , and  $\hat{q}_i$  is the unit vector of 'perfect expression' in a particular condition  $i$ .

We have created a method, `csSpecificity()` that outputs a matrix (with identical shape to that produced by `fpkmMatrix()`) of specificity scores (S) across all conditions for all features in a `CuffFeatureSet` or `CuffGeneSet`.

```
> myGenes.spec<-csSpecificity(myGenes)
> head(myGenes.spec)
```

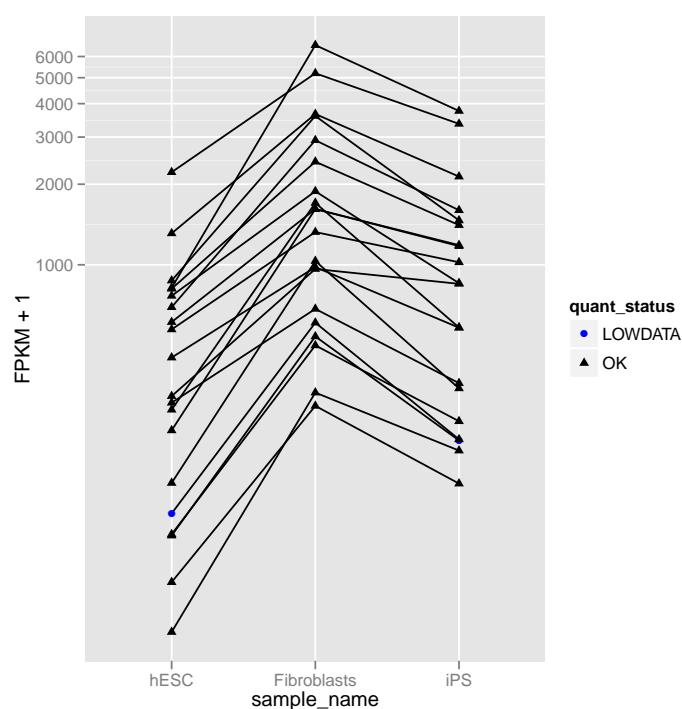
	hESC_spec	Fibroblasts_spec	iPS_spec
XL0C_000069	0.7235320	0.4762355	0.6539797
XL0C_000089	0.6339018	0.6338870	0.6167502
XL0C_000105	0.6246540	0.6337900	0.6261973
XL0C_000115	0.4513380	0.4513380	1.0000000
XL0C_000132	0.6216916	0.6390527	0.6238131
XL0C_000151	0.6233090	0.5276278	0.7208011

$S = 1.0$  if the feature is expressed exclusively in that condition. The `findSimilar()` method outlined below is another method that can be used to identify genes based on specificity but has the added feature that you can determine similarity to a more complex  $q$  expression profile.

## 9.4 Finding similar genes

Another common question in large-scale gene expression analyses is 'How can I find genes with similar expression profiles to gene  $x$ ?'. We have implemented a method, *findSimilar* to allow you to identify a fixed number of the most similar genes to a given gene of interest. For example, if you wanted to find the 20 genes most similar to "PINK1", you could do the following:

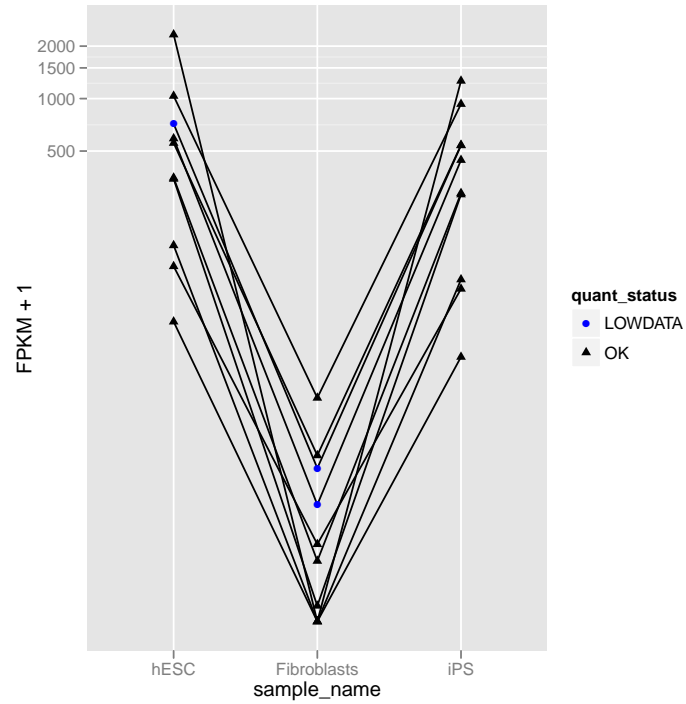
```
> mySimilar<-findSimilar(cuff,"PINK1",n=20)
> mySimilar.expression<-expressionPlot(mySimilar,logMode=T,showErrorbars=F)
```



You are also able to provide your own expression profile in lieu of a 'gene\_id'. The vector provided must match the order and length of *samples()*.

```
> myProfile<-c(500,0,400)
> mySimilar2<-findSimilar(cuff,myProfile,n=10)
> mySimilar2.expression<-expressionPlot(mySimilar2,logMode=T,showErrorbars=F)
```





*findSimilar()* also uses the Jensen-Shannon distance between the probability distributions of each gene across conditions to determine the similarity. We have found this to be a more robust way to determine distance between genes using the high dynamic range of FPKM data. Future versions may allow for other dissimilarity measures to be used instead.

## 10 Miscellaneous

- As of v1.1.3 we attempt to provide new visual cues in most plots that will indicate the quantification status for a particular feature in each given condition. We have enabled this feature by default for most plots to suggest a measure of reliability for each feature in a particular condition. In most cases, this feature can be disabled by setting `'showStatus=FALSE'`.
- All plotting functions return ggplot objects and the resulting objects can be manipulated/faceted/alterd using standard ggplot2 methods.
- There are occasional DB connectivity issues that arise. Not entirely sure why yet. If necessary, just `readCufflinks` again and this should solve connectivity issues with a new RSQLite connection object. If connectivity continues to be a problem, try `cuff<-readCufflinks(rebuild=T)`
- I am still working on fully documenting each of the methods. There are a good number of arguments that exist, but might be hard to find without looking at the source.

## 11 Known Issues

- Large cuffdiff runs (e.g.  $\geq 10$  conditions) produce very large results files. These will take some time to parse and populate the cuffData.db sqlite database. While this is only a one time cost, the process can take a while. We are working on making the table writes and indexing significantly faster.
- Cuffdiff does not 'require' that gene\_ids, isoform\_ids, TSS\_group\_ids, or CDS\_ids be unique in your reference gtf file. In fact, duplicate IDs will be aggregated by cummeRbund in the indexing phase and will produce undesirable effects. Please ensure that all of your IDs are unique prior to running cuffdiff (see cuffmerge for help) to avoid this issue.

## 12 Session info

```
> sessionInfo()

R version 2.15.0 (2012-03-30)
Platform: i386-pc-mingw32/i386 (32-bit)

locale:
[1] LC_COLLATE=C
[2] LC_CTYPE=English_United States.1252
[3] LC_MONETARY=English_United States.1252
[4] LC_NUMERIC=C
[5] LC_TIME=English_United States.1252

attached base packages:
[1] splines      stats      graphics  grDevices  utils      datasets
[7] methods     base

other attached packages:
[1] Hmisc_3.9-3      survival_2.36-12 cluster_1.14.2
[4] cummeRbund_1.2.0 reshape2_1.2.1  ggplot2_0.9.0
[7] RSQLite_0.11.1   DBI_0.2-5

loaded via a namespace (and not attached):
[1] MASS_7.3-17      RColorBrewer_1.0-5 colorspace_1.1-1
[4] dichromat_1.2-4  digest_0.5.2      grid_2.15.0
[7] lattice_0.20-6   memoise_0.1        munsell_0.3
[10] plyr_1.7.1       proto_0.3-9.2     scales_0.2.0
[13] stringr_0.6      tools_2.15.0
```