

Genome project tables in the genomes package

Chris Stubben

November 1, 2011

The **genomes** package collects genome project metadata from NCBI (<http://www.ncbi.nlm.nih.gov>) and the ENA (<http://www.ebi.ac.uk/ena>) and provides tools to summarize, compare and plot the data in the R programming environment. Genome tables are a defined class (*genomes*) and each table is a data frame where rows are genome projects and columns are the fields describing the associated metadata. At a minimum, the table should have a column listing the project name, status, and release date. A number of methods are available that operate on genome tables including **print**, **summary**, **plot** and **update**.

There are a number of ways to install this package. If you are running the most recent R version, you can use the **biocLite** command.

```
R> source("http://bioconductor.org/biocLite.R")
R> biocLite("genomes")
```

Since the format of online genome tables may change (and then **update** commands may fail), I would recommend downloading the development version for fixes in between the six month release cycle.

```
R> install.packages("genomes",
  repos="http://www.bioconductor.org/packages/devel/bioc", type="source")
```

Genome tables from the Genome Project database at NCBI include prokaryotic projects (**lproks**), eukaryotic projects (**leuks**), metagenomes (**lenvs**) and viruses (**virus**). The **print** methods displays the first few rows and columns of the table (either select less than seven rows or convert the object to a **data.frame** to print all columns). The **summary** function displays the download date, a count of projects by status, and a list of recent submissions. The **plot** method displays a cumulative plot of genomes by release date (Figure 1, use **lines** to add additional tables).

```
R> data(lproks)
R> lproks
```

A genomes data.frame with 6968 rows and 32 columns

	pid	name	status
1	33011	Abiotrophia defectiva ATCC 49176	Assembly
2	12997	Acaryochloris marina MBIC11017	Complete
3	16707	Acaryochloris sp. CCMEE 5410	Assembly
4	45843	Acetivibrio cellulolyticus CD2	Assembly
5	70153	Acetobacteraceae bacterium AT-5844	In Progress
...
6968	34927	Zymomonas mobilis subsp. pomaceae ATCC 29192	Complete
	released	...	
1	2009-03-17	...	
2	2007-10-16	...	
3	2011-06-03	...	
4	2010-08-11	...	
5	<NA>	...	
...	
6968	2011-06-17	...	

```
R> summary(lproks)
```

```
$`Total genomes`
```

```
[1] 6968 genome projects on Oct 24, 2011
```

```
$`By status`
```

	Total
In Progress	2865
Assembly	2316
Complete	1787

```
$`Recent submissions`
```

RELEASED	NAME	STATUS
1 2011-10-20	Leptospira interrogans serovar Lai str. IPAV	Complete
2 2011-10-20	Propionibacterium acnes ATCC 11828	Complete
3 2011-10-14	Pelagibacterium halotolerans B2	Complete
4 2011-10-07	Acidaminococcus intestini RyC-MR95	Complete
5 2011-10-07	Streptococcus pyogenes Alab49	Complete

```
R> plot(lproks, log='y', las=1)
```

```
R> data(leuks)
```

```
R> data(lenvs)
```

```
R> lines(leuks, col="red")
```

```
R> lines(lenvs, col="green3")
```

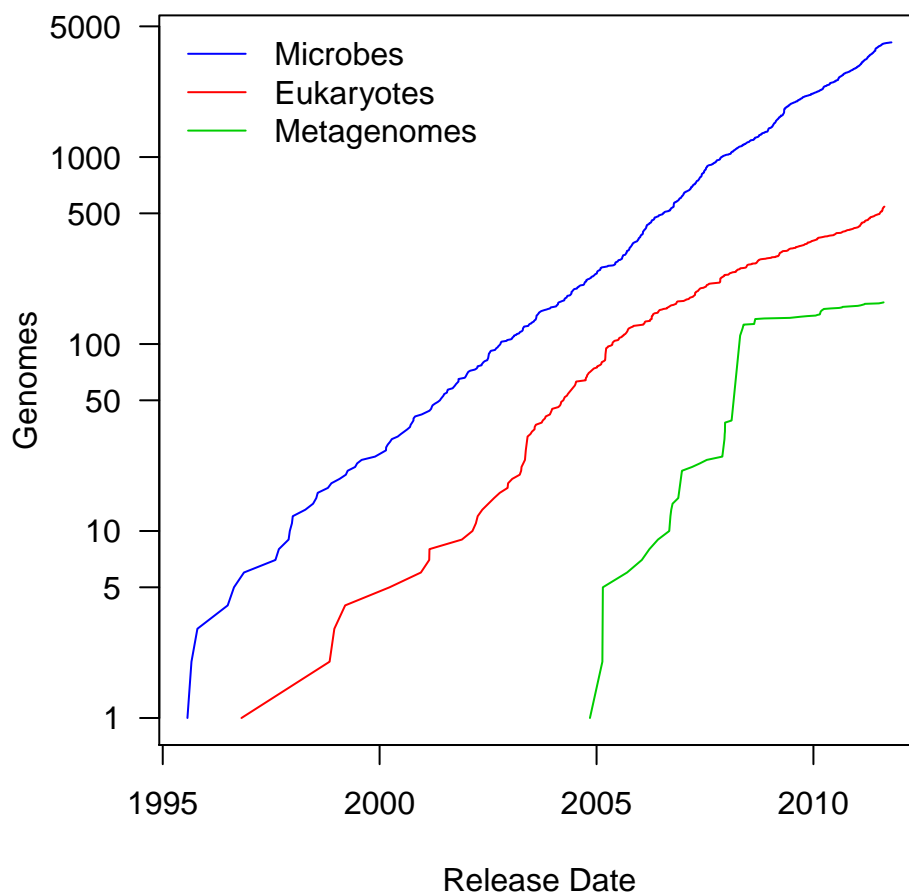


Figure 1: Cumulative plot of genome projects by release date at NCBI.

```
R> legend("topleft", c("Microbes", "Eukaryotes", "Metagenomes"),
        lty=1, bty='n', col=c("blue", "red", "green3"))
```

Most importantly, the `update` method downloads the latest version of the table from NCBI and displays a message listing the number of project IDs added and removed (not run).

```
R> update(lproks)
```

A number of additional functions assist in selecting, sorting and grouping genomes. The `species` and `genus` functions can be used to extract the species or genus from a scientific name. The `table2` function formats and sorts a contingency table by counts.

```
R> spp<-species(lproks$name)
R> table2(spp)
```

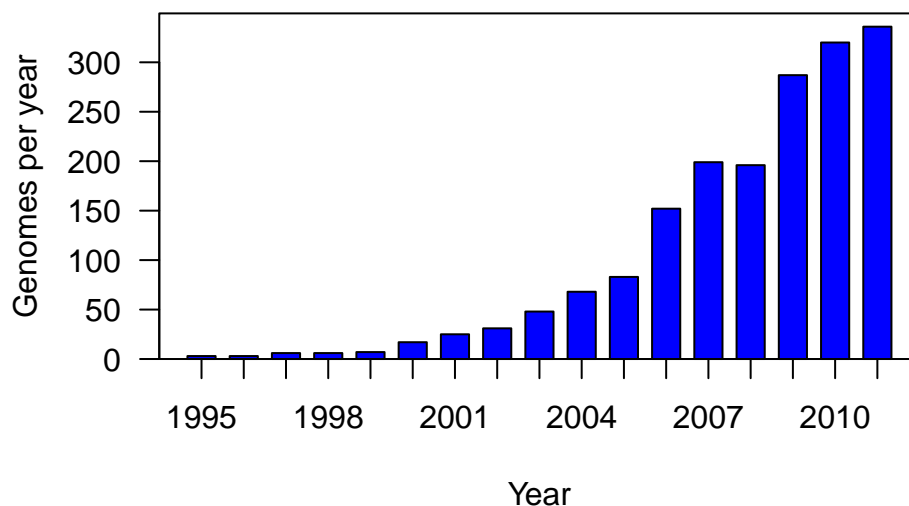


Figure 2: Number of complete microbial genomes released each year at NCBI

	Total
<i>Escherichia coli</i>	588
<i>Salmonella enterica</i>	217
<i>Staphylococcus aureus</i>	216
<i>Helicobacter pylori</i>	192
<i>Vibrio cholerae</i>	150
<i>Streptococcus mutans</i>	136
<i>Streptococcus pneumoniae</i>	102
<i>Yersinia pestis</i>	95
<i>Mycobacterium tuberculosis</i>	88
<i>Leptospira interrogans</i>	77

The `month` and `year` functions can be used to extract the month or year from the release date (Figure 2).

```
R> complete <- subset(lproks, status == "Complete")
R> x<-table(year(complete$released))
R> barplot(x, col="blue", ylim=c(0,max(x)*1.04), space=0.5, las=1,
  axis.lty=1, xlab="Year", ylab="Genomes per year")
R> box()
```

Because subsets of tables are often needed, the binary operator `like` allows pattern matching using wildcards. The `plotby` function can then be used to plot the release dates by status using labeled points, in this case to identify complete and draft sequences of *Yersinia pestis* (Figure 3).

